

INTERNATIONAL SCHOOL OF MANAGEMENT EXCELLENCE

**Weekend PGDM + US CPA
(AICTE Approved)**

**Weekend PGDM + US CMA
(AICTE Approved)**

International by Credentials and Culture
Corporate Centric-Approach
Driven by Excellence
Focus & Rigours Learning
for Dual Outcome

Becker+

morgan
beyond professional education



TASK

Hock
international

About ISME

ISME is a leading business school offering world class education through a student focused culture of excellence, international outlook, entrepreneurial thinking and industry alignment. ISME is part of the NVT group, an ISO accreditation body that has certified companies for over 25 years across 36 countries. ISME was founded in 2006 by alumni from CMU, Purdue and Wharton, USA.

About Becker Professional Education

Becker Professional Education is a global leader in professional education, with a track record of growth spanning more than 60 years. Becker has helped nearly half a million Accounting and Healthcare professionals advance their careers through their product offerings, which include the CPA Exam Review, USMLE® Exam Review and Continuing Professional Education courses. Becker's global presence includes more than 2,000 partners in various prominent institutions.

About HOCK International

In 2000, Brian Hock founded HOCK Training in Moscow, Russia, to provide classroom courses for CPA, CMA, CIA, CFA Exams, and others. Based on his classroom teaching experience, Brian founded HOCK international in 2003 in the U.S. offering self-study materials for accounting professionals worldwide. HOCK soon established itself as a worldwide leader in CMA and CIA exam preparation.

HOCK international is a family business that is focused on offering you the most comprehensive materials and best-in-class personalized support. When you study with HOCK, you become part of our family and we will support you for as long as you need to pass the exams. Whether it takes 6 months or 6 years, we are your partners in passing the exam.

INDEX

• ISME Advantage	Page: 02	• CPA Highlights	Page: 06	• MoU ISME & Becker's	Page: 11
• Excellence in Culture, Education	Page: 03	• Approach to Learning	Page: 07	• CMA Highlights	Page: 12
• Learn from the Best Faculty	Page: 04	• International Testimonial	Page: 08	• Apply to ISME CMA	Page: 13
• What does it take to become a CPA?	Page: 05	• Program Structure	Page: 09	• Students Testimonial	Page: 14
		• Apply to ISME CPA	Page: 10		

ISME Advantage

International by Credentials and Culture

- UK - London School of Economics
- USA - Westcliff University
- Canada - Carleton University
- Australia - University of New Castle
- Singapore - Singapore Institute of Management & Management Development Institute of Singapore

Focus & Rigours Learning for Dual Outcome

- Professional Qualification with Leadership Skills
- 100% Alignment of Curriculum with US CPA
- Outcome-based Training for Holistic Development
- 50+ Accomplished Faculty with Practitioner Experience

Driven by Excellence

- Ranked 25th All India by Business India, 2020
- Ranked 39th All India by Times of India B-School Rankings (2019)
- Receipts of Best ROI since 2006
- Ranked 3rd Best B-School of Eminence by Competition Success Review (CSR) 2019

Corporare-centric Approach

- International Conferences, Panel Discussions and Guest Lectures
- Over 100 companies like PwC, Wells Fargo, E&Y, TCS, Deloitte recruit our students
- Over 1600 alumni working in MNCs in India and abroad

Excellence in Culture, Education and Leadership



Over 100 companies visit our campus for placements



Learn from the Best Faculty

Highly Experienced Faculty comprising of CPA | CMA Practitioners, Industry Leaders, International Scholars & Accomplished Academicians



Your Career as a CPA | CMA

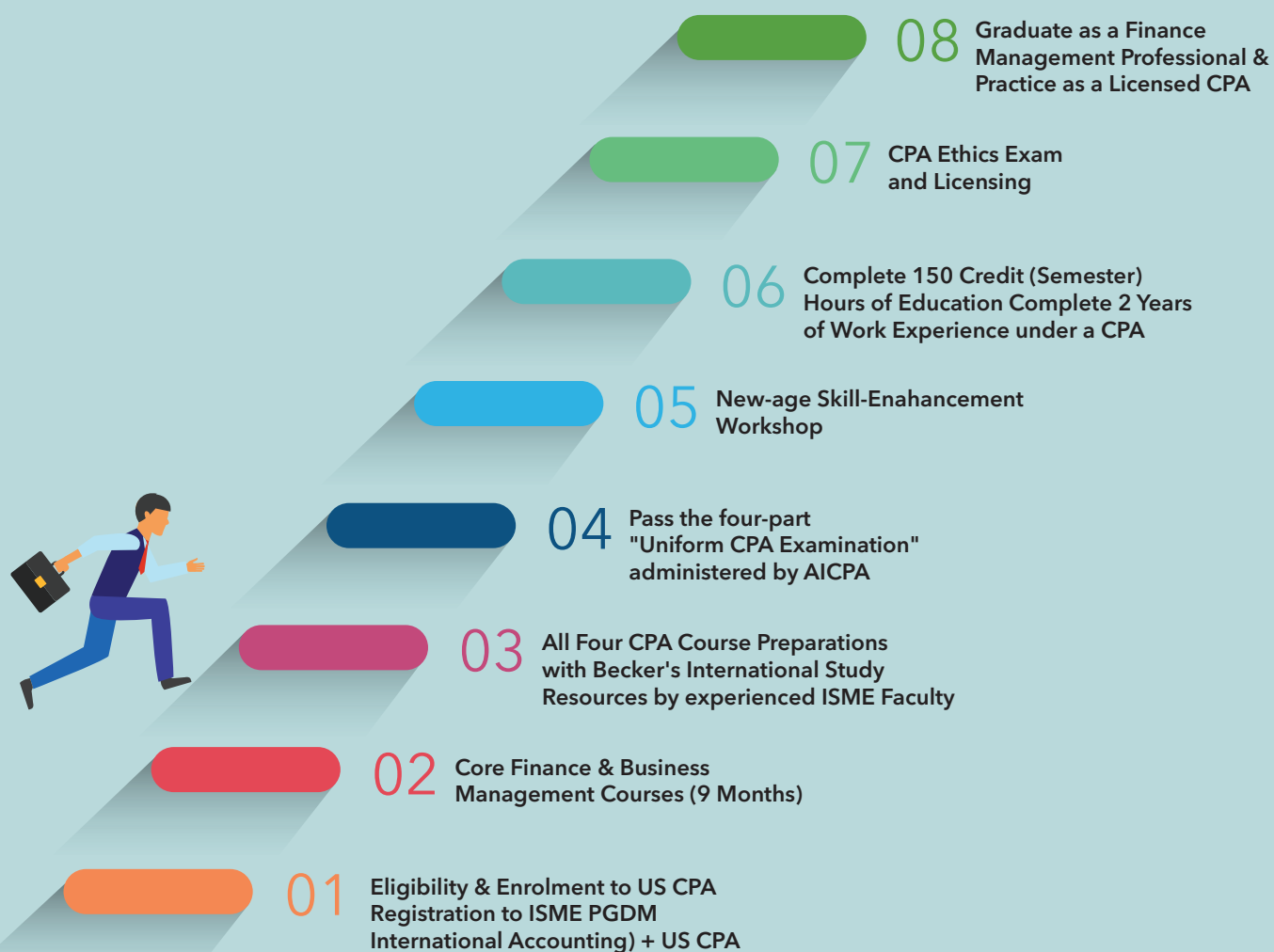
As a CPA | CMA, you're the holder of a range of skills and in-depth knowledge related to accounting and finance, which means your expertise is valued across all industries and sectors globally. The CPA | CMA designation is a stepping stone to whatever business career you can imagine or aspire to be in, and makes you a highly sought-after strategic business partner. In addition to the added value of your skills, becoming a qualified CPA | CAM means you have a vested duty in protecting public interest.

The CPA | CMA credential is targeted towards a number of roles within an organization, giving you many career opportunities. Here are some of your options:



What does it take to become a CPA?

PGDM (Finance) + US CPA Journey



US CPA Highlights



Approach to Learning

■ ISME's US CPA based post-graduate programs are offered to working professionals in the live online mode and 6-8 sessions held during weekends.

■ The program is designed to build the soft and functional skills needed for managerial positions, while also preparing the student to take all the four exams of the US CPA licensing process. The program is offered across 7 terms (4 terms for one-year program) spread over 22 months (11 months for one-year program), wherein 4 terms of CPA courses are rigorously structured to prepare the student 100% for each of the four exams of US CPA, whereas the remaining terms deliver business management & finance courses.

■ The program is delivered by experienced academicians & industry practitioners and the course materials are provided by Becker's international CPA review materials.



Testimonials from Benefitted Students



Rita Haidar – Beirut, Lebanon

Becker's comprehensive study material & instructions have enabled me to pass all four CPA exams from the first attempt, while keeping my full-time job!

Khaldoon Ghaith – Amman, Jordan

I highly recommend Becker's learning system as they were the key to my success. The support team was advising me on the right path throughout my experience!

Tong Guo, San Fransico, CA

Using Becker CPA Review, I passed all 4 sections on the first try within 12 months: FAR-92, AUD-87, REG-82, BEC-94

Jason Delos Reyes Boyer and Ritter, CPAs and Consultants

With less than 6 months before my start date, I knew it would be a daunting task, but with Becker it became all the more manageable. I credit most of my success to Becker's outstanding study materials and quality live instruction. Thank you Becker for helping turn my ambitious goal into a startling reality!

Program Structure

Two-years PGDM (International Accounting) + US CPA

Term-1 | September 2022 to January 2023

18 Weeks | 5 Months | 144 Online Live Sessions on Weekends

- US CPA Subject: Financial Accounting & Reporting (FAR)
- PGPM Subject: Corporate Finance Practices (CFP)
- PGPM Subject: Managerial & Professional Skills (MPS)
- Skill Workshop: One-day Immersive Workshop-
"Advanced Excel for Accounting & Audit Professionals"

Term-2 | February-2023 to June-2023

18 Weeks | 5 Months | 144 Online Live Sessions on Weekends

- US CPA Subject: Auditing and Attestation (AUD)
- PGPM Subject: Financial Markets & Services (FMS)
- PGPM Subject: Applied Business Statistics (ABS)
- Skill Workshop: One-day Immersive Workshop-
"Report Writing & Formal Written Communication"

Term-3 | July-2023 to November-2023

18 Weeks | 5 Months | 144 Online Live Sessions on Weekends

- US CPA Subject: Regulation (REG)
- PGPM Subject: B2B Marketing (BBM)
- PGPM Subject: Organisational Behaviour & Structure (OBS)
- Skill Workshop: One-day Immersive Workshop-
"Emerging Accounting ERP Systems"

Term-4 | December-2023 to April-2024

18 Weeks | 5 Months | 144 Online Live Sessions on Weekends

- US CPA Subject: Business Environment & Concepts (BEC)
- PGPM Subject: Derivatives & Alternative Investments (DAI)
- PGPM Subject: Multinational Financial Management (MFM)
- Skill Workshop: One-day Immersive Workshop-
"FinTech & Financial Analytics"

Total Program Duration: 18 months



Sat-Sun (6-8 hrs/week) 1500+ Live Online Classes | Experienced Faculty from ISME

Each Term

- 1 Core CPA Course
- 2 Management Courses
- 1 Skill Workshop
- 14-18 Week Classest

1

Paid Internship
6 months November-April of First Year
Stipend of approx Rs. 30,000 per month

2

Paid Internship
6 months November-April of Second Year
Stipend of approx Rs. 30,000 per month

3

Job Offer from
Industry Partner

Mon- Fri | Training/Internship | Onsite | Full-day@ Industry Partner



Apply to ISME

Admission to the PGDM program at ISME is highly competitive. The Admissions team reviews applications on an individual basis looking at both quantitative and qualitative aspects of an applicant's professional and academic background. An elaborate selection process is followed to ensure quality enrolment.

Eligibility CPA License:

- CPA license is issued by the 55 state boards of accountancy of the US that are part of NASBA. Each state board has different eligibility criteria that the aspirant needs to meet to take the US CPA exams.
- Master's Degree in any of the streams of Commerce, Accounting or Finance
- An aspirant needs 120 credits to take the US CPA exams and 150 credits to get his CPA license
- It's considered that one year of university education in India is equal to 30 credits of US education
- In some cases, first division graduates of a three-year degree from NAAC-A accredited universities of India are qualified to take the US CPA exams too.

Eligibility ISME PGDM (Finance) + US CPA:

- Graduate in Commerce / Management / Accounting / CA / CMA / CS / ACCA
- Work Experience of 2 years*

**The Selection Process will include a Written Test for Freshers)*

Selection Process:

Stage 1: Complete Application Form from <https://isme.in/ex/>

Every applicant seeking admission to ISME needs to complete the Application Form online, (<https://admission.isme.in/pg>) attach the required documents and submit the entire application to ISME's Admission Office.

Stage 2: Personal Interview, **Stage 3:** Admission Decision

Admitted candidates are sent the Admission Offer letter. The admission would be final only after the receipt of confirmation of Admission Acceptance from the candidate and the payment of the registration fee. Fee once paid is non-refundable.

Fees & Scholarship

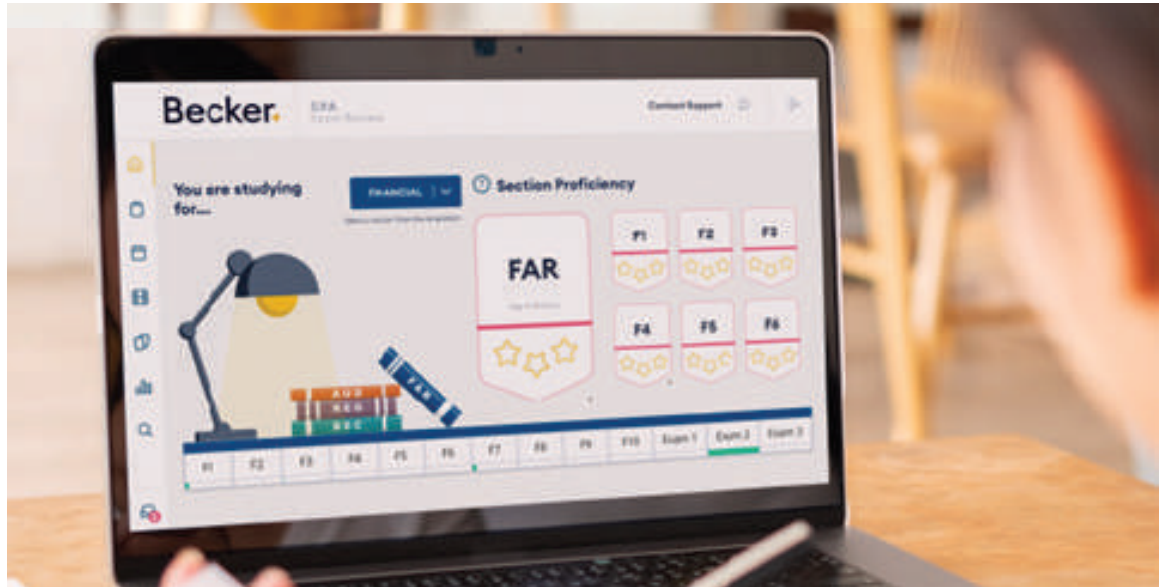
<https://isme.in/ex/>

Bank Loans:

ISME is committed to assisting students in finding the necessary financial resources for their education and will assist in providing the necessary information for obtaining a bank loan. ISME guarantees support towards the student application for the educational loan process.

International MoU between ISME & Becker's

ISME has entered into an International MoU with Becker's International to offer the Post-graduate programs that enable the student to 100% prepare for the four-CPA exams. Currently, ISME is offering the programs for candidates from India, Indonesia, Bangladesh, Myanmar, Nepal, Malaysia, Sri Lanka, Bhutan and Maldives.



The ISME-Becker Difference

- » Exam-matching Materials
- » Relevant and up-to-date
- » Complete 4-part CPA Exam Review Course, AICPA Blueprint Matching (Updated for 2021)
- » AI based Adaptive Technology to focus preparation in challenging areas
- » Proficiency Badge
- » Full Access to Review Material- Printed & Digital
- » 500+ Live Online Classes from ISME
- » Unlimited Personalized Practice Tests
- » Customized Coursework
- » 1250+ flashcards – web and app based
- » 3 Simulated Exams for each of the 4 CPA Sections that mirror the CPA Exam in format
- » Final Review with condensed material, new MCQs and TBS

US CMA Highlights

■ The ISME PGDM (International Accounting) + US CMA Prep is uniquely designed to prepare a full-fledged accounting professional with

- (1) Knowledge of International Accounting Practices
- (2) Technical Skills for Accounting Processes and
- (3) Managerial Skills.

- » Professionally Planned coaching through HOCK premium review material
- » Live Online Classes from CMA Certified Faculty working in Big Accounting Firms & Investment Banks
- » Structured and Rigorous Methodology to ensure Learning Discipline
- » Start-to-End CMA qualification Support
- » Assured placement with Rs 6-9 Lacs on successful completion of program

Delivery

- » 200+ Hours of step by step CMA coaching.
- » Comprehensive yet easy-to-read online textbooks in annotatable format.
- » Practice essay questions including detailed answers and explanations.
4000+ MCQs Practice previous exam questions online with study or practice exam modes.
- » Mock exams contain questions not used elsewhere in the materials and provide a final review before taking the real exam.
- » HOCK PassMap™ guides you through the exam syllabus, one topic at a time. Each Study Unit in
- » PassMap™ links the textbook and practice questions.
- » CMA Expert Support

About Us

Major benefits of pursuing the CMA (USA) course:

- Global Recognition
- Flexibility in the course
- Higher Earnings
- Good career prospect
- IMA (Institute of Management Accountants) is a worldwide association of accounting and finance professionals in the business.





Apply to ISME

Admission to the PGDM program at ISME is highly competitive. The Admissions team reviews applications on an individual basis looking at both quantitative and qualitative aspects of an applicant's professional and academic background. An elaborate selection process is followed to ensure quality enrolment.

Eligibility ISME PGDM + US CMA:

- 10+2 or any graduate
- Work Experience will be an add on

**The Selection Process will include a Written Test for Freshers)*

Selection Process:

Stage 1: Complete Application Form from <https://isme.in/ex/>

Every applicant seeking admission to ISME needs to complete the Application Form online, (<https://admission.isme.in/pg>) attach the required documents and submit the entire application to ISME's Admission Office.

Stage 2: Personal Interview, **Stage 3:** Admission Decision

Admitted candidates are sent the Admission Offer letter. The admission would be final only after the receipt of confirmation of Admission Acceptance from the candidate and the payment of the registration fee. Fee once paid is non-refundable.

Fees & Scholarship

<https://isme.in/ex/>

Bank Loans:

ISME is committed to assisting students in finding the necessary financial resources for their education and will assist in providing the necessary information for obtaining a bank loan. ISME guarantees support towards the student application for the educational loan process.

Testimonials



Pooja K, PGPM + US CPA, Bangalore

"ISME's US CPA program is unparalleled. The faculty members are not only highly qualified but also incredibly approachable and supportive. They go the extra mile to ensure that each student fully grasps the material and feels confident going into the exams. The success I achieved is a direct result of their dedication and expertise."



Arvind Rajguru, PGPM + US CPA, Bangalore

"I had been searching for the best US CPA coaching for months, and I finally found it at ISME. The faculty here is simply outstanding. They bring a wealth of real-world experience and deep knowledge to each class, making complex topics easy to understand. Thanks to their expert guidance and personalized support, I passed my CPA exams with flying colors!"



Roshel Vaz, PGPM + US CPA, Bangalore

"The US CPA preparation at ISME is top-notch. The faculty's depth of knowledge and teaching methodology are second to none. They provided me with all the tools and resources I needed to excel in my CPA exams. The individual attention and tailored feedback I received were invaluable in my preparation journey. ISME truly stands out as the best in the field."



Contact Us

Campus Address:

International School of Management Excellence,
Sy. No. 88, Chembanahalli, Near Dommasandra Circle,
Sarjapur Road, Bangalore - 562125, Karnataka, India.

Email : training@isme.in

Website: www.isme.in

Blog: blog.isme.in

Facebook: facebook.com/ismeexcel

Instagram: [activities.isme](https://www.instagram.com/activities.isme)

LikedIn: <https://www.linkedin.com/school/ismebangalore/>

Mobile: +91 8904612962 (ISME) | +91 9921007392 (TASK Academy)