

INTERNATIONAL SCHOOL OF MANAGEMENT EXCELLENCE

Explore. Experience. Excel.



TABLE OF CONTENTS

| | |
|--|--------------|
| Mission and Vision | 2 |
| Chairman's Message | 3 |
| Director's Message | 4 |
| ISME's Transformational Leaders | 5-6 |
| Dean's Message | 7 |
| International Leadership Message | 8 |
| HOD (PG) & PG Programs | 9 |
| HOD(UG) & UG Programs | 10 |
| HOD (Research) & PhD Programs | 11 |
| INTERNATIONAL CREDENTIALS | 13-20 |
| Faculty with International Exposure | 13-16 |
| International by Credentials and Culture | 17 |
| What makes ISME International | 18 |
| London School of Economics | 19 |
| Learning in Singapore | 20 |
| CULTURE OF EXCELLENCE | 21-28 |
| Excellence is a Way of Life at ISME | 21 |
| Recognition for Excellence | 22 |
| World-class Smart Campus | 23-24 |
| Excelling in other Arenas of Life | 25-28 |
| CORPORATE CENTRIC | 29-40 |
| Gearing up for the Corporate Environment | 29-30 |
| Sector-wise Placements | 31-32 |
| Industry Collaborations | 33 |
| Experiential Learning | 34 |
| Guest Speakers from the Corporates | 35-36 |
| Recruiters Speak | 37 |
| ISME Alumni working in Global companies | 38-39 |
| Excellent Placements (2020) | 40 |
| LIFE AT ISME | 41-45 |
| Student Diversity | 41 |
| Hostel and Campus Facilities | 42 |
| Bangalore: The Hub of Opportunities | 43-44 |
| Admission Director's Message | 45 |



CREATING PROFESSIONALS WITH AN INTERNATIONAL OUTLOOK

Our Mission

Our Mission is to transform every student to become a successful business professional with a global outlook through:

- Imparting quality education by outstanding business leaders and academicians
- Providing a culture of excellence, entrepreneurial thinking, social responsibility and industry alignment

Our Vision

Our Vision is to be a business school of international repute

“THERE SHOULD BE NO LIMITS TO WHAT ONE CAN ACHIEVE.”

ISME is an institution that provides a platform where there are no limits to what students can achieve. We make that happen through the three pillars of action we practice which are: providing a truly international experience, mirroring corporate work ethics, and working towards excellence in student-focussed experiential learning. With this, we see ourselves nurturing a generation of Managers and Entrepreneurs who are well-versed to think global.

**We invite you to
Explore, Experience and Excel.**



KG Garg

Chairman, ISME, NVT Group
BTech & MTech, IIT, Roorkee,
Bachelor's Degree from Ae.S.I., USA,
Graduate NDI from AFTC, USA

Nitin Garg

Director, ISME
BTech & MTech, IIT Bombay,
MBA, Carnegie Mellon University, USA
(PhD), IIM Lucknow



“AN ALL ROUND LEARNING EXPERIENCE, NOT JUST AN ACADEMIC DESTINATION.”

ISME's culture of excellence and international credentials allow students to gain an all-round learning experience.

INTERNATIONAL CREDENTIALS

The exciting thing about studying at ISME is that a student will be a part of International learning experience. ISME has academic partnerships with World's top institutions like Singapore Institute of Management (SIM), MDIS Singapore, University of New Castle Australia, Carleton University Canada, Westcliff University USA, and University of North Carolina Pembroke USA and many others.

Our faculty have international exposure either through work experience in MNCs or having studied or lived abroad.

1500+ alumni are working in MNC's in India, Canada, USA, Europe, UAE, Australia, Singapore.

CULTURE OF EXCELLENCE

ISME is a part of NVT Quality Certification, a quality certifying body for companies and academic institutions for ISO 9000.

ISME is ranked as 39th All India by Times of India, 27th All India by Business India and recipient of many awards for Excellence in Education and Best ROI since 2006.

ISME welcomes you to a future of learning that enables you to attain your maximum potential.



ISME'S TRANSFORMATIONAL LEADERS

Governing Body

KG Garg
Founder & Chairman,
NVT Group

Nitin Garg
Director, ISME

Vivek Garg
Director, ISME

Tanuj Garg
Director, ISME
Member

Dr. S Shyam Prasad
Professor, ISME
Faculty Member

A N Chandramouli
Board Member- Starragheckert &
CEO ANCM- Management Consulting

Nominee from Industry

Shoma Bakre
Founder and Managing Trustee,
Let's Do Some Good
Nominee from Social Sector

Dr. Anand K Joshi
Ex-Founder Vice Chancellor,
CMR University
Nominee from Education Industry

Shivakumar Venkateswaran
Chief Human Resources Officer -
IIM (Bangalore)
Nominee from Education Industry

Dr. Rony G Kurien
Dean
Member Secretary

Accreditation Board Representatives

Dr. Ramesh U.
Regional Officer & Director, AICTE
AICTE Nominee

Dr. Sudhakara H
Member of the Syndicate
Bangalore University
Nominee for Governing Council

Dr. Ashok D Hanjagi
Professor at Bangalore University
Nominee for Governing Council

Advisory Body

N Balachandra
Director - Consultant
Business & HR Advisory

Pallavi Jain
Director- Admission, ISME

Pronob J Chetia
Director HR- Asia Pacific Region,
Volvo, Singapore

Dr. Giridhar J. Gyani
Director General at Association
of Healthcare- Providers (India)

Krishna Kumar
CEO Simplilearn

N.K.Palta
CEO - Maini Global Aerospace

Dr. Ramesh G. Tagat
Former Prof. IIM (Bangalore),
Former Academic Mentor, ISME

Vijayanti Margassery
Associate Director, HR

S Devarajan
Director-Design, TVS
Motors

Amitabh Saxena
CEO Anexas Europe



Curriculum Advisory Board (Academic)

Dr. Seema Gupta
Professor in Marketing, IIMB

Dr. Shankarsan Basu
Professor in Finance, IIMB

Dr. U Dinesh Kumar
Professor in Analytics, IIMB

Dr. Ravi Kumar
Professor in HR, IIMB

International Advisors

Arvind Pachhapur
MBA Univ. of Minnesota,
USA

Rakesh Duggirala
MBA University of Chicago,
USA

Prof. Senthil Veeraraghavan
Wharton School of Business,
USA

Cyrus Driver
MBA IIM (A)

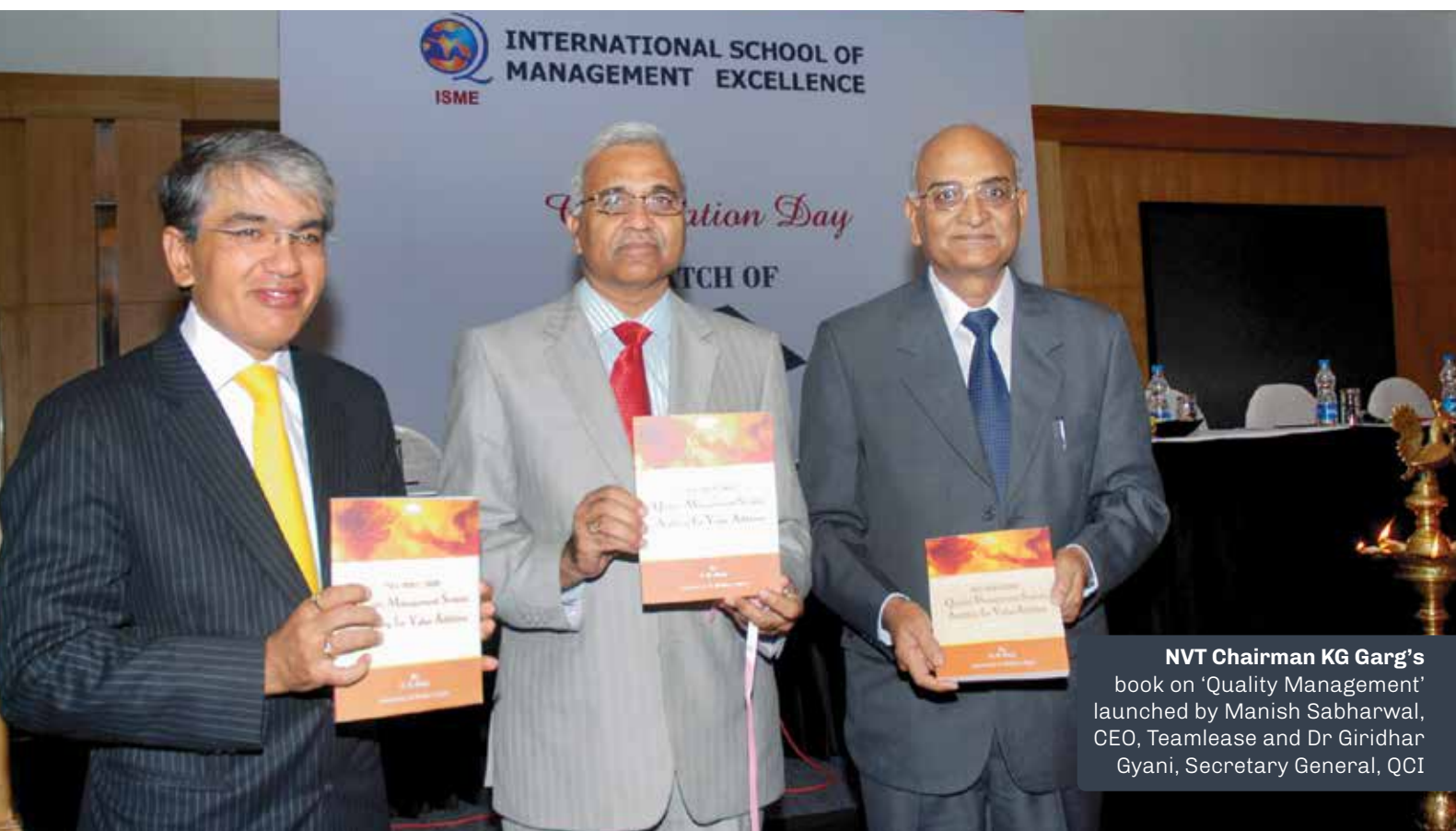
Sai Punjabi
MBA MIT, USA

Sudhendu Saxena
MBA IIM Lucknow

Rajesh G M Kumar
MBA MIT,
USA

Samrat Basu
IBM; MBA IIM
Bangalore

Tanuj Garg
MS, CMU: MBA,
Wharton Business School, USA



NVT Chairman KG Garg's
book on 'Quality Management'
launched by Manish Sabharwal,
CEO, Teamlease and Dr Giridhar
Gyani, Secretary General, QCI



**“IT’S OUR CORPORATE AND
STUDENT CENTRIC CULTURE
THAT SETS US APART”**

Dr. Rony G Kurien

Dean
BSc., MBA (Symbiosis),
Ph.D. (Anna University)

ISME is an institution with a strong focus on quality and excellence.

CORPORATE-CENTRIC

Our curriculum is dynamic and updated with inputs from the senior management in corporates and leading academicians of IIMs to meet the requirements of the industry. We provide our students corporate exposure through industry visits and conduct over 50 guest lectures by eminent industry professionals corporates each year.

With over 100 MNCs visiting our campus for placements, the students get enormous choice in the kind of jobs they are looking forward to.

STUDENT-CENTRIC ENVIRONMENT OF FUN AND LEARNING

Our students get individual attention from our faculty through mentoring and coaching to help them excel in their course work and career choices.

Student Clubs and Labs complement "beyond the classroom" learning through training in soft skills, writing blogs, using gaming techniques, videos and case studies.

Students also get to lead by organizing intercollegiate fests, cultural events and other events like TEDx, Model UN among many others.

I would like to welcome you to join ISME and benefit from our outstanding faculty, staff, students and alumni in an inspiring environment for your personal and professional development.

Vivek Garg

Director, ISME

MBA, Purdue University, USA

**EDUCATION EXPERIENCE OF A LIFETIME**

The entire faculty and team at ISME are committed to provide you with the educational experience of a lifetime. You will be equipped with the qualities necessary for future business leadership. Our team-based learning approach emphasizes an advanced understanding of strategy, leadership and management to ensure maximum returns on your educational investment.

Tanuj Garg

Director, ISME

MBA, Wharton School of Business;
MS, Carnegie Mellon University, USA**A PRACTICAL WAY OF TEACHING WITH ACADEMIC RIGOUR**

It is generally said that Business/Management cannot be taught but learned. The ISME programs impart education through a fine blend of theory and practice. Real-time situations created through management games, guest lectures, business excellence series and academic rigour through classroom sessions help the student relate concepts to practice.

FREEDOM TO EXPLORE

We expose our students who hail from over 20 states across India to the dynamics of corporate environment and global business challenges through regular interaction with corporate guests, experiential learning assignments, latest cases, library resources, varied pedagogies and training workshops which are delivered in our state-of-the-art campus.

ISME prides in providing personalised attention and we assure you of a very fruitful and enriching learning experience.

Dr. Shampa Nandi
HOD (PG Programs)

ISME offers the following Post Graduate courses

PG Diploma in Management (PGDM) + International Study Program, Singapore

AICTE approved and NBA accredited and Equivalent to MBA by AIU

Specializations:

Major:

Business Analytics, Marketing, Finance, Human Resources

Minor:

Digital Marketing, FinTech, People Analytics, Technology, Product Management

Additional Certifications:

- Business Strategy Game
- Placement Oriented Value-Added Term
- Creative leadership to Drive Change from Singapore Institute of Management, Singapore
- Exceptional Customer Service from Management Development Institute, Singapore

PG Diploma in Management (PGDM) e-Business + International Study Program, Singapore

AICTE approved and NBA accredited

Specializations:

Major:

E Business

Minor:

Digital Marketing, FinTech, People Analytics, Technology Product Management

Additional Certifications:

- Business Strategy Game
- Placement Oriented Value-Added Term
- Creative leadership to Drive Change from Singapore Institute of Management, Singapore
- Exceptional Customer Service from Management Development Institute, Singapore

Prof. Rema Vishwanathan
Ph.D. (Computer Science)
MPhil, MSc, HOD (UG Programs)



SPARK YOUR IMAGINATION

Classes at ISME will spark your imagination. The Singapore Study trip, Model United Nations Program, Academic Labs, Value Added Workshops, and Industry visits build the right attitude, functional and interpersonal skills which in turn enables the student to gain a global perspective.

ISME offers the following Under Graduate courses in management

Bachelor of Business Administration (BBA), Bangalore University + International Study Program, Singapore

Specializations:

Marketing, Finance, Human Resources

Additional Certifications:

- 6 additional certifications
- Creative leadership to Drive Change from Singapore Institute of Management, Singapore
- Exceptional Customer Service from Management Development Institute, Singapore

Bachelor of Commerce (B Com) Bangalore University + ACCA + International Study Program, Singapore

Highlights:

6 exempted papers and 2 optional papers of ACCA when done through ISME

Additional Certifications:

- 6 additional certifications
- Creative leadership to Drive Change from Singapore Institute of Management, Singapore
- Exceptional Customer Service from Management Development Institute, Singapore



Dr. Meenakumari
MSc, MPhil, Ph.D.
Professor and Head (Ph.D. Programs)

FOCUS ON RESEARCH

The objective of the research department is to strengthen research and innovation practices across the specializations and institutionalize it within the organization in accordance with the requirements of the Governing bodies. The institution is an approved Research Centre of University of Mysore for the Ph.D Programme.

Internal research colloquiums are held fortnightly to promote and provide suggestions among the peer group. The faculty members are encouraged to write blogs on any contemporary areas of management research. The Research Centre disseminates information regarding “Call for papers” in reputed journals and conferences periodically. Information regarding funded projects, Scopus and ABDC journals are also disseminated to faculty members and research scholars.

The institution conducts International conference every year with the theme “Contemporary issues in Management” to promote research on a larger scale. Many international speakers, thought leaders, research scholars and participants, share their ideas and strategies to overcome various challenges that are pertinent. The Institution provides opportunity to young researchers to contribute research articles and publish it after peer evaluation in the online journal “Xplore”. The centre promotes collaborative research, joint publications and takes up funded research projects.

ISME offers the following Ph.D. program

Ph.D. Program in Management from University of Mysore



The faculties at ISME are a huge asset. The practical and corporate exposure that I received at ISME has helped me stand out amidst my peers.

**Shubankar Adhikary,
PGDM 2019-21**



The individual attention that I receive from the faculty at ISME has helped in my overall development as a confident individual.

**Kiran Mayi,
BBA, 2018-21**



The industry focussed curriculum along with extensive interaction with corporate guests and globally exposed faculty gave me the practical knowledge. This has helped me get recognition in my company.

**Jayesh Sharma,
PGDM 2017-19, Mu Sigma**



LEARN FROM ACCOMPLISHED FACULTY HAVING INTERNATIONAL QUALIFICATIONS AND WORK EXPERIENCE

Our full-time faculty have lived in countries like USA, Sweden, UK, China, Mexico, Singapore, Malaysia, UAE, Australia, France, Germany, Indonesia, and Bangladesh.

They come with rich experience in global multinationals like Cipla, GM, HSBC, Ocwen Financials, Deloitte Consulting, Booz Allen & Hamilton, Gallup Consulting, Capgemini, Marico, Australian Trade Commission, Accenture, Bank of America, HDFC Bank, ICICI Bank, Oracle Corporation, Logica Infotech, Flipkart, Samsung among others.

ISME's culture of open-door policy and individualised attention with faculty to student ratio of 1:10 helps in the transformation of the students.

MARKETING & STRATEGY



ANSHU SHARMA
B.Tech (IIT Kharagpur),
M.Tech (IIT Kharagpur),
PGPM (ISB Hyderabad)



NITIN GARG
Director, ISME
BTech & MTech,
IIT Bombay,
MBA, CMU, USA
IIM Lucknow (Ph.D)



Dr. SHAMPA NANDI
MSc, MBA (IIT Dhanbad),
Ph.D. (IIT Dhanbad)



Dr. SHYAM PRASAD
MBA, Ph.D.
in Management



VIVEK GARG
B.E, MBA,
(Purdue University, USA)



ANILKUMAR R,
B.E, MBA,
KSET(Management),
(Ph.D. in Marketing)



RAGHURAMAN
B, B.E, PGDM,
(IIM Bangalore)



MANOHAR D. RAO
B.Tech (IIT Madras),
PGDM (IIM Ahmedabad)



Dr. RONY G KURIEN
BSc., MBA (Symbiosis)
Ph.D.(Anna University)



REMA VISWANATHAN
BSc., MBA (Symbiosis)
Ph.D.(Anna University)



JATINDER MOHAN
MBA
(Bangalore University)



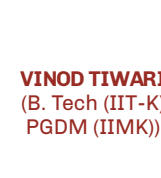
HARITHA S
(B.Tech, MBA
(NITK, Surathkal)



RAJA SANKARAN
(B.Sc. MBA)



Dr. RAVI K R
(B.Com., PGDBA, Ph.D)



VINOD TIWARI
(B. Tech (IIT-K)
PGDM (IIMK))

FINANCE & ECONOMICS



AMITAVA SENGUPTA
B.Tech (IIT Kharagpur),
PGDBM (IIM Ahmedabad)



INDRANIL SAHA
(B.E, PGDM
(IIM Calcutta))



KIRAN KUMAR. K V
M.Com, PGDM, (Ph.D)
(Finance & Marketing)



R. NARAYANASWAMY
M.Com, MBA, M.Phil,
CPFA, AFP (Investments)



RISHIRAJ DASGUPTA
B.E, PGDM
(IIM Calcutta)



SAKEERTHI S
(BBA, MBA,
PGDCA, UGCNET)



SUDINDRA V. R
B.Com, MBA (Finance),
(P.hD)



Dr. SUDHINDRA BHAT
MPhil, MBA,
Ph.D in Finance



VIKKU AGRAWAL
B.Com (Hons),
Master's in Corporate
Management.

DINESH GOPALAN
MBA (IIM Ahmedabad),
ICWA

SURESH. A
B.Com, CFB, FPSB

RAJESH MADHAVAN
MBA (Philadelphia
University, USA, Oracle
Financials).

HUMAN RESOURCE MANAGEMENT



H.S. MISHRA
MSc, LLB,
Diploma in Management
(MDI Gurgaon)



Dr. M. RAMESHKUMAR
BSc (Marine),
Ph.D. in Management.
NET, SLET, KSET.



PALLAVI JAIN
PGDM, PG in HRM
(Wharton Business
School, USA)



SHURLY TIWARI
MPM, PGDBM, (Ph.D)
(CMD, Modinagar).



Dr. SWAROOP REDDY
M.Sc., Ph.D



PREEJA SREEDHAR
PGDMCJ,
PGHRM



SURESH MENON
B.Sc, LLB,
PGDPM



SRIRAM PRABHAKAR
(BE, PGDBA (XIME))



SHIJIMOL
(MSc, MBA)

**SARADHA
SUBRAMANIAN**
M.Sc., M.Phil,
PGDBA

BUSINESS ANALYTICS



Dr. SHAMPA NANDI
MSc, MBA (IIT Dhanbad),
Ph.D. (IIT Dhanbad)



Dr. SHYAM PRASAD
MBA, Ph.D. in Management



Dr. MANJUNATH B R
MBA, M.Com,
CFA, EPAF, Ph.D.,
UGC NET



STUTI AGARWAL
MBA (IIM Bangalore)



SANKARA PRASAD
MSc, MS (USA),
Ph.D. (Alliance University)



**Dr. ANISH ROY
CHOUDHARY**
B.Tech (IIT Madras),
PGDM (IIM Ahmedabad)



Dr. MEENAKUMARI
(MSc, MPhil, Ph.D)



MANOHAR D. RAO
B.Tech (IIT Madras),
PGDM (IIM Ahmedabad)

OPERATIONS & QUALITY MANAGEMENT



A.N. CHADRAMOULI
B.E (NIT),
PGPM (IIM Kanpur)



**VISWANATHAN
HARIHARAN**
M.Tech
(IIT Bombay)



C.N. UDAYA SHANKAR
BE, MPhil in Management,
MS. Mfg, (Ph.D) Management,
Bharatiar University



RISHIRAJ DASGUPTA
BE, MPhil in Management,
MS. Mfg, (Ph.D) Management,
Bharatiar University

MANAGERIAL SKILLS & ENTREPRENEURSHIP



**Dr. JIWAN KUMAR
SRIVASTAVA**
M.Sc., MBA
(HR & Marketing),
Ph.D.



Dr. RONY G KURIEN
BSc., MBA (Symbiosis)
Ph.D.(Anna University)



KRISHNAN R
PGPM, LIII (GEN)



ARUNA H M
B.Ed., M.Ed., Masters
in Psychology, Ph.D
(Delhi University)



PREEJA SREEDHAR
PGDMCJ, PGHRM



RAMESH PUTTANNA
Tech, MBA



Dr. RAVI K R
(B Com., PGDBA, Ph.D)

INTERNATIONAL BY CREDENTIALS AND CULTURE

A group with global operations

ISME's parent organization, NVT Quality Certification (NVT QC), an ISO accreditation body that has certified companies for over 25 years across 36 countries. NVT QC helps in bringing a culture of best practices and the philosophy of quality into ISME.

International background of leadership

ISME has been founded by alumni from leading US institutions like Carnegie Mellon University, Purdue and Wharton Business School, USA.

International academic partnerships

ISME has various International tie-ups with top universities around the world in countries like Singapore, Australia, USA, Canada, Bangladesh for study trips, faculty exchange, pathway for undergraduate programs and joint research.

Faculty with international exposure

All faculty at ISME bring with them an international exposure, which they have gained either by having studied abroad in leading universities or have worked in MNCs.

Global inputs

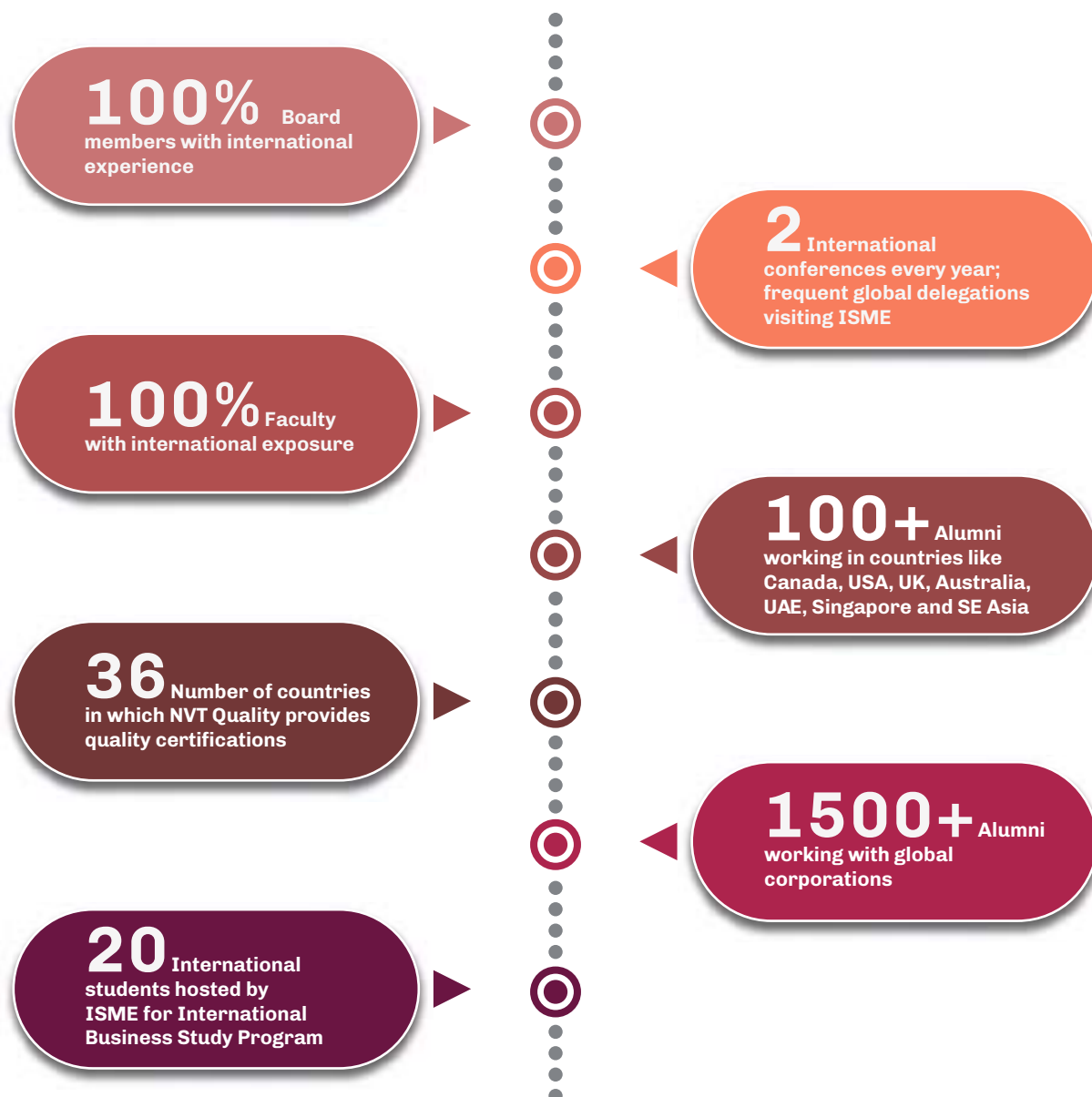
Our students are part of courses designed and offered at some of the top business schools leading to additional certifications like Business Strategy Game from Professor Arthur Thompson, University of Alabama, USA.

India Business Study Program

ISME conducts India Business Study Program, which helps international students get the exposure to business and culture opportunities in India.



WHAT MAKES ISME INTERNATIONAL



Academic Collaborations



University of New Castle,
Australia



Carleton University,
Canada



West Cliff University,
USA



Daffodil International
University, Bangladesh



National Entrepreneurship
Network



Singapore Institute
of Management



Management Development
Institute of Singapore



Association of Indian
Management Schools



All India Management
Association

SUMMER PROGRAM AT THE LONDON SCHOOL OF ECONOMICS, UK

Founded in 1895, LSE is a leading specialist social science institution in the world. Its teaching and research is recognised worldwide as a benchmark of quality.

Study with students from over 90 countries, stay on LSE campus housing and complete a 3-week certification in LSE.

Since London is one of the most culturally developed and exciting cities in the world, students will have a lot to learn from its diversity.

The learning at London School of Economics has helped me gain insights on how this generation prepares for international business roles.

Angad Soni,
PGDM 2015-17, Northern Trust



EXPERIENTIAL LEARNING TRIP TO SINGAPORE FOR ALL

All PGDM, BBA and B Com students visit Singapore as a part of their experiential learning. They are housed in the hostels of Singapore Institute of Management or Management Development Institute, Singapore.

Students get to visit top industries, attend workshops, and get certifications. A lifetime opportunity to explore Singapore and learn International Business.

As Singapore is a melting pot of several cultures, the students get an opportunity to familiarize themselves in this aspect. They also get to interact with Academicians and Heads of various organizations and get to learn from them in proximity.



WHERE EXCELLENCE IS A WAY OF LIFE

ISME is a part of NVT Group which is a certifier of quality for companies and Institutes for ISO 9000, thus excellence runs in our DNA.

Rankings

ISME is a recipient of many awards for excellence in education and Best ROI since 2006.

Innovative teaching methodology

Teaching at ISME through experiential learning, case studies and practical projects, provide a new facet to understanding businesses.

Blended learning

ISME encourages tools like eBooks, e-Journals and ISME faculty videos on the ISME YouTube Channels, which lead to learning outside the classroom.

Placement-centric coursework

ISME has pioneered the concept of Value-Added Term (VAT) that enables students to integrate their learning so they are geared up for opportunities in the corporate world.

Research focus

ISME faculty work on various emerging areas of management and participate in international conferences, the outcome of which is incorporated into the curriculum.

Insights from industry

ISME hosts 50+ guest speakers and practitioners from the industry every year. There is a strong focus on developing students to become aware of current business events through courses on current business updates and being part of panel discussions.





Ranked as a Top B School:

- Times of India (39th All India)
- Business India (27th All India)
- Competition Success Review (3rd All India by Eminence)
- Recipient of many awards of Excellence in Education & Best ROI since 2006



INTEGRATED WORLD-CLASS SMART CAMPUS TO ENHANCE THE LEARNING EXPERIENCE

ISME has a state-of-the-art campus and a feel-at-home boarding facility.

Classrooms

ISME has well designed classrooms equipped with latest audio and video equipment

Knowledge Center

The college has an extensive collection of books, magazines, and journals on Management.

The library subscribes to many national and international journals and periodicals for students to enhance their learning.

ISME library also has access to IIM Bangalore library, British Council of India online library and access to databases like EBSCO, and JSTOR.



Computer Lab

The computer lab is equipped with the latest computers and software to support the academic activities of students. The campus is Wi-Fi-enabled.

ISME is a venue for CAT, XAT, MAT, CLAT, SNAP, UGAT & IPMAT

The advanced computing facilities makes ISME an ideal venue for all major entrance exams.



The infrastructure at ISME is of international standards. The world-class classrooms and business class auditorium makes you feel like being in a global corporate environment.

**Sonal Sharma,
PGDM 2015-17, Goldman Sachs**



LEARNING TO EXCEL IN OTHER ARENAS OF LIFE

There's life beyond academics, and ISME is just the kind of place to hone skills and participate in events outside of academic programs in various co-curricular and extra-curricular activities.

Social Club

Social Club conducts social events like Teachers' Day, Diwali celebrations, Thanksgiving Day, Christmas and also activities like supporting the terminally-ill cancer patients. Such participation helps in improving leadership skills, emotional quotient and empathy within the individual.



Communication Club

Speech Weavers – The Communication Club has been formed to weave the speaking abilities among our students making them orators for life. The objectives of Communication Club are to understand Public Speaking skills, analyse the inhibiting factors and apply the 7C's of Communication.

Entrepreneurship Club

The Academic Club organizes guest lectures, visits to industries, business workshops, case study competitions and personality development workshops. These activities enhance the knowledge, awareness and the overall personality of the managers-to-be for the real industry environment.



Literary Club

The Literary Club of ISME nurtures and promotes intellectual growth through creative activities like writing, collage-making, painting, debating and panel discussions. This club manages the ISME blog and the Instagram community of ISME that captures the plethora of activities happening on the campus, giving students a platform to showcase their social skills, creativity, talent, and leadership qualities.



Academic Club

The Academic Club organizes guest lectures, visits to industries, business workshops, case study competitions and personality development workshops.



CSR Club

The CSR club aims to sensitize the students about their duties and liabilities towards the community they live in. The club works towards ensuring an impactful transformation in the targeted area of social support and in developing a sense of empathy and responsibility towards the underprivileged.

Social Activities Centre

This centre along with other clubs also organizes ISME's Intercollegiate cultural extravaganza known as Busibuzz. Such participation helps in improving leadership skills.

ISME.FIT

The main aim of ISME.FIT is to make its students fit, flexible and strong. ISME is cautious about the health and fitness of its students, and believe in making a better and healthy society for tomorrow. ISME.FIT serves as a platform for the students to develop themselves physically and mentally. The focus of the program is to develop flexibility, strength and endurance among its students.



GEARING UP FOR THE CORPORATE ENVIRONMENT

The focus at ISME is on preparing students for the corporate world. With 'corporate' at the core of our teaching, there are many activities to prepare future business leaders.

Value Added Term (VAT)

ISME offers an additional and unique mini semester focused on preparing students for the corporate world. The curriculum focuses on soft skills, interview skills, group discussions, interactions with senior management. In short, everything to groom young management graduates. These trainings are beyond the regular academic program which help in transforming students for a smoother transition into the corporate world.

The unique 4-week training program is aimed at preparing students for the Placement Season. The courses offered are:

- 1** Group Discussions and Mock Interviews
- 2** Management Techniques Review
- 3** Global Business Strategy Game by Prof. Arthur Thompson, University of Alabama, USA
- 4** Advanced Excel Workshops
- 5** Many other value added programs

Open corporate culture

ISME encourages and practices an open international corporate culture. This entails an open-door transparent policy with senior faculty members being accessible and professional communication standards being maintained.

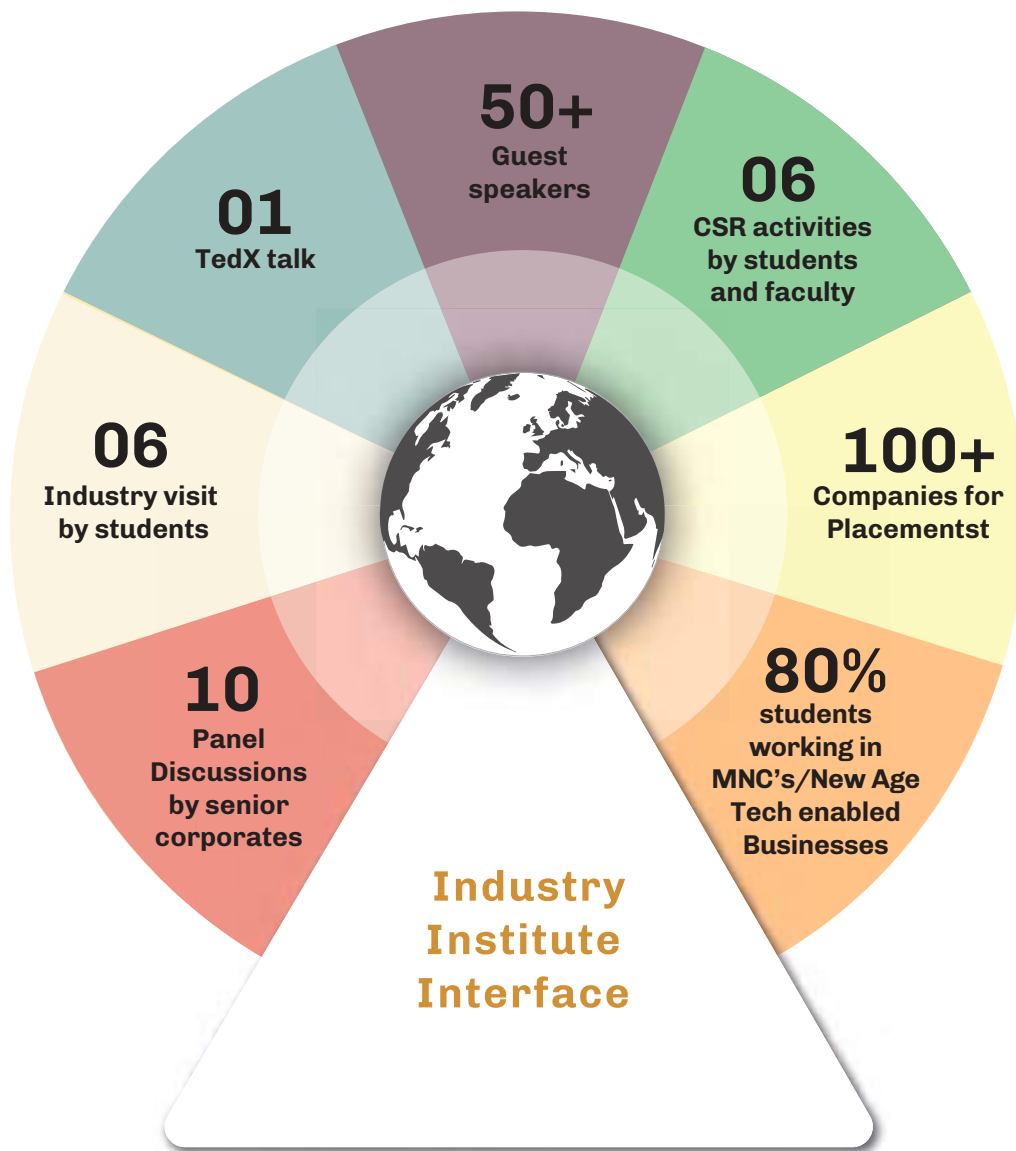
Corporate-like discipline

To get students geared for corporate life, the college follows a calendar that mirrors a corporate calendar in terms of rigour, holidays and on-time deliverables.



The Placement Committee, at ISME, works relentlessly, to bring in some of the renowned names of the corporate world. The placement process is smooth and transparent for all.

Twinkle Goyal,
PGDM 2017-19, PwC



Internship handholding

During their internship with an organization, every student has a faculty partner who is associated with a manager in the company. This faculty member helps the student gain the most out of the internship by being an interface between the company's manager and the student.

Managerial skill development

An important part of business success is soft skills. At ISME, students are groomed in time management, leadership, creativity, negotiation skills, business etiquette, etc, as a part of the Managerial Skills Development program.

Industry-focused curriculum

ISME's course content is regularly updated in consultation with corporates to keep students in tune with evolving practices at workplace across disciplines.

Industry interface and visits

Panel discussions and talks from corporate leaders are organized regularly. To give students an insight into corporate culture and how organizations and industries function, about 2 to 3 industry visits are organized every trimester.

OPENING THE DOOR TO A FUTURE OF OPPORTUNITIES

ISME graduates set foot in various domains as soon they pass out of their program, finding their niche in various sectors. Every year there are over 100 companies visiting ISME to recruit our students at various organizational levels. Here's a glimpse of the various sectors and brands where ISME alumni are placed for various job profiles in Marketing , Finance , HR , Analytics & Legal.

Financial Services/Other Services



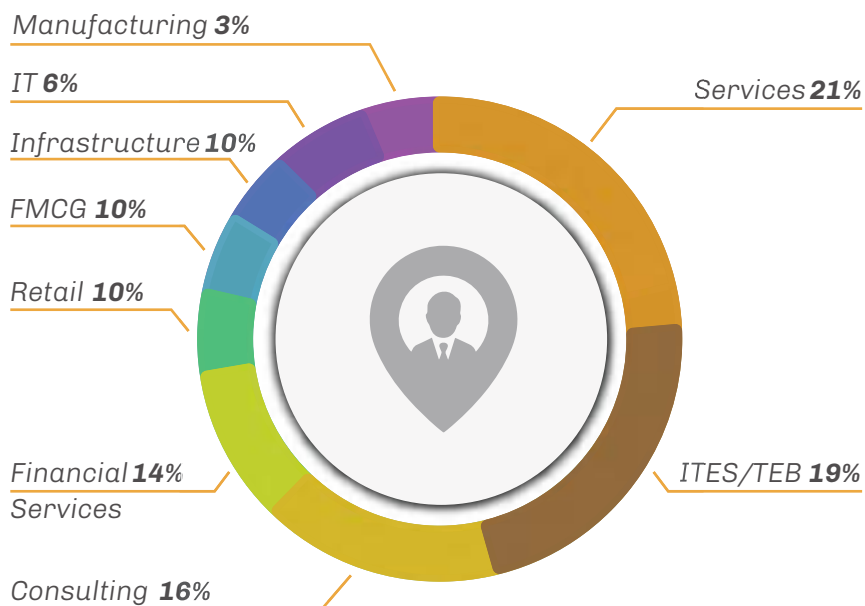
Consulting



FMCG



SECTOR-WISE DISTRIBUTION OF STUDENT PLACEMENTS



IT/ITES/TEB



Retail



Infrastructure



Manufacturing



And many more in every sector.

PROFESSIONAL & INDUSTRY BODIES COLLABORATIONS:

Our Director, Mr. Nitin Garg is the Co-chair of the 3i initiative (Industry Institute Interface) of Bangalore Chamber of Industry and Commerce (BCIC).

Our Dean, Dr. Rony G Kurien is the Joint Secretary (Hon.) of the National HRD Network, Bangalore Chapter.

| | | |
|---|--|---|
|  <p>Bangalore Chamber of Industry and Commerce</p> |  <p>Bangalore Management Association</p> |  <p>Confederation of Indian Industry</p> |
|  <p>National Human Resource Development</p> |  <p>Whitefield Export Promotion Industrial Park Association</p> |  <p>Society for Human Resource Development</p> |

LEARNING ON THE JOB IS LEARNING FOR THE JOB

Management Consulting Center

The Management Consulting Center specializes in high-end management consulting and training. It's a two-decade old organization that has provided consulting services to companies like TCS, Satyam, General Motors, Hindustan Aeronautics Limited, ITI, Lemuir Group, BPL, MICO and many others.

Institutional memberships

ISME is an institutional member of BMA (Bangalore Management Association), NHRD (National HRD Network), BCIC (Bangalore Chamber of Industries and Commerce), NEN (National Entrepreneurship Network) and CII. ISME interacts and works with other members to find suitable opportunities for students.

Interface with the industry

ISME's Career Opportunity Center constantly engages and interacts with the industry to understand market trends to create placements opportunity for the students. The Centre systematically organizes:

- Panel discussions, workshops, conferences and guest lectures to get students exposed to corporate leaders and industry-best practices.
- Industry visits to familiarize students with various career options.

The Center is proactively involved in building strong bonds with the corporate leaders to facilitate placements.

EXPERIENTIAL LEARNING ALL THE WAY

Summer internships

ISME's Career Opportunity Center helps place first year students as summer interns for 8 to 10 weeks with various corporate and industries. This helps students get their industry experience and enables them to decide on their specialization.

Mentoring and counselling

The Career Opportunity Center organizes workshops on resume writing, cover letters, interview skills, job search skills, networking and counselling sessions to help prepare students to develop effective interpersonal and presentation skills.

Recruiting activities

The Center organizes on-campus and off-campus recruitment events where companies are invited to participate, share and discuss career opportunities in their organization. Every year there are over 100 companies visiting ISME to recruit our students at various organisational levels. ISME has achieved a 100% placement record since its inception.



CORPORATE LEADERS@ISME



ISME has over 50 industry leaders visiting annually, to enrich students with insights and share their experiences and best practices.



Over 50 industry CXO's visit ISME for interacting with the Students.
Some of the distinguished speakers over the last two years have been:



Dr. Ashutosh Sinha
Professor
IIM Lucknow

Topic: "Area of Strategic Management"



Ms Preeja Sreedhar
Leadership Coach
Mu Sigma

Topic: "Workshop on Self-development-Parichay"



Dr. Mathew Manimala
Professor
IIM Bangalore (Ex)

Topic: Education, learning and career competencies"



Mr. Manoj Shenoy
CEO
& T Financial Services

"Indian Economic Indicators, Sector-wise growth last 10 years, Union Budget and its Impact"



Ms. Sandhya George
Senior Manager , Global L&D
Essilor

Topic: "Learning is a Constant Curve"



Kashyap Dalal
Co-founder & Chief Business Officer
Simplilearn

Topic: "Journey of Simplilearn- complete cycle from ideation to funding to current milestones of success"



Mr. S R Vijai
Global Lead- Insurance Domain and
Advisory Group- Wipro

Topic: New Technologies like analytics, block chain, and disruptions they are bringing



Sanjay Agarwal
Program Director
IBM

Topic: Quantitative Techniques



Avesh Jha
Senior Vice President HR & OD
HGS

Topic: "Leadership & Organisational Development"



Sanjeeb Das
Associate General Manager
HCL

Topic: "Corporate Readiness and Network Marketing"



Ravi Gowda
CEO
Global Mergers

Topic: "Various Funding options for Entrepreneurship"



Viswanathan Easwaran
Associate Director – Human Resources
Sperdian Technologies

Topic: "Connect on Industry emerging trends on employability"



Shikha Nag
Founder Director
Indian Academy of Public Speaking

Topic: "Showcasing the Best of YOU" Self-Development Workshop



Dr. Sankarshan Basu
Professor of Finance & Accounting
IIM Bangalore

Topic: "Indian Business & Economic Landscape Today and Tomorrow"



Deek Parassinit
Regional Sales Manager - Middle East & South Asia
TCT

Topic: "Leadership and Stress Management"



Pandidurai Durairaj
CEO and Founder
Erflogs

Topic: Effective business plan presentation and getting funding from investors



Dr. Seema Gupta
Professor of Marketing
IIM Bangalore

Topic: "Indian Business & Economic Landscape Today and Tomorrow"



Prof. Dhanushkodi
Professor/ Consultant/ Trainer
Bizcatalyst Consultants (Pvt.) Ltd.

Topic: "Legal Framework for business"



Prof. Joy Varghese
Former Director HR
National Aluminium Company Ltd.

Topic: "MIR"



Sudarshan Purohit
Founder
Better World

Topic: "How to grow fast in career and start managing people than being an individual performer"



T.Srikanth Bhagavat
Managing Director & Principal Advisor
Hexagon Capital

Topic: "Monetary Policy and its effect on business & economy"

RECRUITERS SPEAK

TALENT THAT'S WIDELY ACKNOWLEDGED AND VALUED.

"We are associated with ISME for the last 3 years. We have recruited students for Internship and for full time job positons. The students are hardworking and have exhibited utmost professionalism. We are impressed with the knowledge and skills the students possess. We congratulate ISME for imparting quality education and look forward to long term association"



- Ravi Kumar- Head HR Feedback Consulting

"Mu Sigma has a truly fruitful partnership with ISME – we have recruited fantastic talent from ISME who continue to grow in our organization and add tremendous value to our DNA. The work ethic, cultural DNA, quality of education delivered at ISME is helping mould students into leaders, and we look forward to a sustainable partnership with ISME"



- Hashir Sitheekh-Head of Founder & CEO office MuSigma

"A key ingredient of a knowledge worker is the ability to think on their feet and the 'fire in the belly' that will keep them driven. The students of ISME have shown that these qualities are part of their working culture both as student (during internship) and as a corporate citizen at IDC."



- Venu Reddy, General Manager, International Data Corporation

"Our relationship with ISME is growing stronger as we pass each year. We appreciate the hard work the institution puts in towards grooming future business leaders who are passionate, competent and ready to take on any challenge ahead. All students have exhibited tremendous commitment to work and have excelled in their portfolios in a very short span of time. We would definitely like to increase our engagement with ISME in the coming years too."



- Suveen S, Deputy General Manager (HR), NxtGen Datacenter and Cloud Technologies Pvt Ltd

"ISME has been of great support for our campus hiring needs, our association has been from 2015 and we have hired students from the PG streams of Marketing & Finance. The overall aspects of candidates from ISME is better than most campuses we visit or hire from. Right from the interview stage and post joining, the students do well. The students and the placement committee are very cooperative during the whole process. We hope for a long-standing professional relationship with this institution and wish the staff and students all the best in all the endeavours."



- Shankar Raman S, Deputy Manager (HR), WNS Global Services (P) Ltd

ON A FUTURE THAT SPEAKS OF THEIR LEARNING AND SUCCESS

Students of ISME have created an identity of success and triumph for themselves across different levels, at some of the best companies. Here's what some of our alumni have to say about their learning at ISME.



ISME has always been a second home to me. It has guided me to be a sincere, punctual, and hardworking professional. The faculty, infrastructure as well as opportunities like Industry visits, guest lectures, and participation in every event has made me grow with a better understanding of the corporate world. It has made me corporate ready.

Hena Tuli,
PGDM 2014-16, Intellipat

Alumni: Excelling in their careers

The name of ISME is being held high by its alumni, many of whom are charting successful careers within the country and abroad – whether it's in being part of an organization in the position they are in, or in looking after the operations of their family-held business. The placement record of all alumni is available on the ISME webpage www.isme.in/placement-record.



OVER 1500+ ISME ALUMNI WORKING IN GLOBAL COMPANIES

| | | | |
|------|-------------------------|--|---------------|
| 2007 | Rajendra Khatri | Kuwait Finance House | Kuwait |
| 2007 | Ankur Sharma | MetLife | UAE |
| 2007 | Devanshu Darmora | Nielsen | UAE |
| 2008 | Abhilasha Gupta | TCS | London |
| 2008 | Divya Chinwan | Essar Oil | Singapore |
| 2008 | Soma Jaiswal | Olam | Germany |
| 2009 | Deepak Kumar | Imetris Corporation, Senior US Staffing Specialist | United States |
| 2009 | Vinita Rastogi | Graydon | UK |
| 2009 | Vidhi Chauhan | HSBC Global Banking & Markets | Singapore |
| 2009 | Manpreet Kaur | Ernst & Young | United States |
| 2009 | Newton Raja | Emirates Business Machine LLC | UAE |
| 2009 | Divya Srivastava | Scotia Bank | Canada |
| 2010 | Deepak Kumar | Imetris Corporation | United States |
| 2010 | Aditi Thakur | Suncorp Group | New Zealand |
| 2010 | Nirmit Gang | Kanoo Consulting Services | Bahrain |
| 2010 | Vivek Goyal | Serco | Hong Kong |
| 2010 | Vindhya Malviya | Pricewaterhouse Coopers | United States |
| 2010 | Ankit Srivastava | Wipro Promax Analytics Solutions | Australia |
| 2010 | Jayna Ambubhai Patel | SGGG Fund Services Inc | Canada |
| 2011 | Puja Devanand | Verizon Media Services | Canada |
| 2011 | Lal Mohammad Khan | Salam Technology | Qatar |
| 2011 | Richa Sharma | Kaufland | Australia |
| 2011 | Ronald Fernandes | Capillary Technologies | UAE |
| 2011 | Smita Lakra | Picodi.com | Poland |
| 2011 | Sharmistha Roy | Wolf Oil Corporation | Belgium |
| 2011 | Renjini Rajan | Diamler Trucks | United States |
| 2011 | Praveen Bhaskar | Green Light Recruitment | New Zealand |
| 2012 | Husain Waris Kirmani | Sovereign Corporate Services | UAE |
| 2012 | Garima Pal | Golder | Australia |
| 2013 | Sagar Arun Baria | Emirates NBM | UAE |
| 2013 | Seepica Singh | PayPoint plc | UK |
| 2011 | Pranav Kulkarni | Qatar Financial Centre | Qatar |
| 2014 | Faizal Kallil | Orient Insurance | UAE |
| 2015 | Balaji R | National Bank of Oman | Oman |
| 2015 | Katakam Jahnvi | AON | United States |
| 2017 | Monish Mohanty | Alten Calsoft Labs | United States |
| 2018 | Chandan Kumar S | Wells Fargo | Bangalore |
| 2018 | Vishnu Nath | Walmart | Bangalore |
| 2018 | Dhavala Bhavagnya | Wells Fargo | Bangalore |
| 2018 | Vijaya Krishna Sirigiri | Byju's | Bangalore |

For more information visit <https://www.isme.in/placement-record/>

EXCELLENT PLACEMENTS (2020) IN TOP COMPANIES



ABHISHEK
BARNWAL
West Bengal
IDC



AISWARYA
GOPAL
Kerala
Odessa



AKHIL K P
Kerala
AON



CHANDAN
KUMAR S
Karnataka
Wells Fargo



GARVITA
HADA
Rajasthan
Great Learning



GOLLA RAMU
Telangana
Capgemini



HARSHIT
KHAMESRA
Rajasthan
Odessa



HIMADRI SUVA
TAMULI
Andhra Pradesh
Walmart Labs



J VENKAT SURYA
ABHYUDAY
Jharkhand
IDC



JOY GHOSH
Punjab
Element 14



KASULA HEMANTH
PRAKASH
Andhra Pradesh
Northern Trust



KIRAN
KUMARI
Bihar
AON



KISHORE KUMAR
BEHERA
Odisha
Infosys BPM Ltd



MUPPARAJU
CHAITANYA
KRISHNA
Andhra Pradesh
Wells Fargo



NASRIN
SULTANA
Assam
Simplilearn



NIKITA
SRIVASTAVA
Uttar Pradesh
Walmart Labs



PALLAVI
PRIYADARSINI
Telangana
IDC



PRIYANKA
BEHERA
Odisha
Nxt Gen



RANJITH JHA
Telangana
Nxt Gen



SABYASACHI
BHARADWAJ
Odisha
Kotak Bank



SHIVANI
KUMARI
Bihar
Nxt Gen



SONALI
MADHUSMITA
JENA
Odisha
CDFI



SUBHASIS
SAMANTA
West Bengal
NextGen



SUBHASMITA
PUROHIT
Odisha
TCS



SUMAN
CHATTERJEE
Jharkhand
Ernst & Young



TRIPTI
GUPTA
Rajasthan
Nxt Gen



UDHAY VIR
SINGH
Punjab
Nxt Gen



VENNAKOTA
VASAVI
Andhra Pradesh
TCS



VENNAKOTA
VYSHNAVI
Andhra Pradesh
Ernst & Young

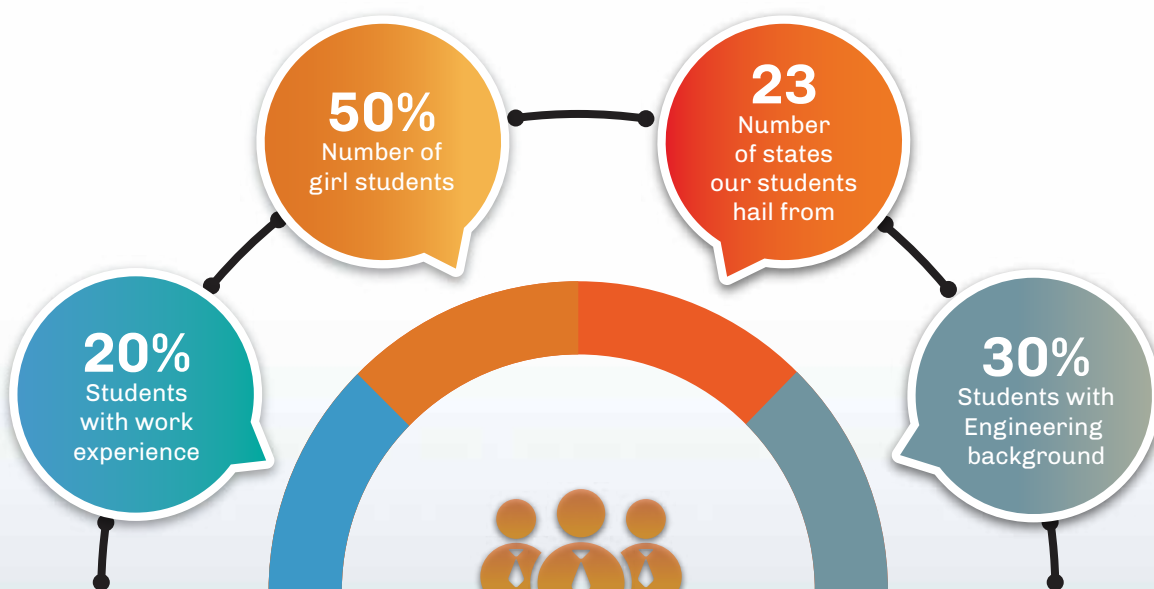


VIJESH.S
Tamil Nadu
TCS

And Many More...

STUDENT DIVERSITY

ISME is like a congregation of Indian states at one place, with students from almost every region of the country arriving to gear up for their future. Life here is a blend of many backgrounds and cultures, with the stage set for a constant exchange of customs and traditions, the air and mood is always of bonhomie, oneness and definitely fun.





The hostel inside the campus provided me a safe, comfortable and resort like environment. This helped us continue the fun and learning beyond the classroom. Hostel rooms are spacious, and the facilities are excellent. It is one of the best places which makes one perfectly at home.

**- Preetpal Singh,
PGDM 2017-19, Cerrid Solutions**



ISME is a melting pot of various cultures as its students represent over 20 states. I have had the best moments of my life at ISME.

**- Himadri Tamuli,
2018-20, Walmart**

Welcome Home

As a ISME student, you will consider our close-knit residential campus your home.

Cafeteria

The spacious campus has a cafeteria with a magnificent view of the amphitheatre. Apart from being a favourite hang-out for social interactions, the canteen provides homely, healthy and hygienic food.

Hostel

ISME has a modern on-campus hostel for boys and girls. It features an open-air amphitheatre, basketball and other sporting facilities with round-the-clock security. The entire hostel is Wi-Fi-enabled for uninterrupted learning environment outside the class.

Hot/Cold Water • Pollution-free atmosphere • North and South Indian veg food • 24/7 CCTV Monitoring • RO filtered drinking water • Spacious playground • Ragging-free campus • 24/7 security • Separate Recreational Room with TV • Volley Ball Court • Badminton court



BANGALORE

A MELTING POT OF IDEAS, THE HUB OF OPPORTUNITIES

There are many reasons that make Bangalore a city to flock to and attracts young and aspiring professionals from across the world.

Bangalore, also known as 'the Silicon Valley of India', 'the IT Hub of India', 'the Startup Capital of India', is always welcoming to anything that's innovative. It has made a place for itself in the 'top 10 preferred entrepreneurial destinations of the world' and has the highest job potential in India.

Bangalore has a pleasant weather throughout the year. The city is a melting pot of cultures, lifestyles, cuisines and ideas that usher in progress. Bangalore is a fun place for youngsters with amazing spread of places to pursue interests like poetry, theatre, art, literature and a lot more.

IT hub of India



Vidhana Soudha



Silicon Valley of India



**KIAL Airport,
Bangalore**



Start up capital of India



WELCOMING THOSE WITH THE DESIRE TO GO PLACES

ISME takes great pride in admitting students from over 20 states every year. This diverse environment helps in nurturing and enriching students, who get individual attention due to our excellent faculty-student ratio. Well-designed curriculum and practical approach towards the courses boost the energy levels of the students. Students are transformed into smart, confident individuals ready to take on the challenges of the corporate world and succeed.

We look forward to meeting you and welcoming you to ISME.

Pallavi Jain

Director,
Admissions & International Relations
HRM, Wharton Business School, USA

PROGRAMS AND ELECTIVES

Campus:

International School of Management Excellence,
Sy. No. 88, Chembanahalli, Near Dommasandra
Circle, Sarjapur Road, Bangalore - 562 125,
Karnataka, India.

Corporate Office:

International School of Management Excellence,
CAP 1, EOIZ, Export Promotion Industrial Park,
Near ITPL, Whitefield, Bangalore - 560 066,
Karnataka, India.

WhatsApp: +91- 97417 77081

Phone: 88806 12345



EXCELLENCE IN
BUSINESS EDUCATION
SINCE 2006



Email: contactus@isme.in
info@isme.in

Web: www.isme.in

Blog: blog.isme.in

Instagram: [activities.isme](https://www.instagram.com/activities.isme)

Facebook: [facebook.com/ismeexcel](https://www.facebook.com/ismeexcel)

Linkedin: <https://www.linkedin.com/school/ismebangalore>