

**From:** Industrial Visit (HRD/Hosur/TVSMotor) <Industrial.Visit@tvs-motor.com>  
**Sent:** Wednesday, 3<sup>rd</sup> May 2023 8:48 AM  
**To:** Mini Pillai - ISME <corporatetraining@isme.in>  
**Cc:** J Subramanian (HRD-IQL/Hosur/TVSMotor) <Subramanian.J@tvs-motor.com>; S Devarajan (AMEG/Hosur/TVSMotor) <sd@tvs-motor.com>; V Sandeep Kumar (NPD - SP/Hosur/TVSMotor) <V.Sandeepkumar@tvs-motor.com>; P Tamilazhagan (HRD-IQL/Hosur/TVSMotor) <Tamilazhagan.P@tvs-motor.com>; K Rajesh (HRD-IQL/Hosur/TVSMotor) <K.Rajeshnithiban@tvs-motor.com>  
**Subject:** RE: Industrial Visit for ISME on 08/05/2023

Dear Madam,

We are happy to provide an Industrial visit to your students.

Date: 08/05/2023

Time: 02:00 PM – 03:30 PM

Place: TVS Motor company limited, Hosur.

<https://goo.gl/maps/vydU8diNE55YEDs38>

Security Instructions and Safety guidelines have been attached.

Please go through and follow the guidelines strictly during the Industrial visit.

You need to reach the company by 02:00 PM on  
08/05/2023

Thank You.



S.Yeshaswini  
HRD-Education & Training  
TVS Motor Company  
Mobile: +91 7418376555  
S.Y.



A handwritten signature in green ink, appearing to read 'K. Rajesh'.

**PRINCIPAL**

**INTERNATIONAL SCHOOL OF MANAGEMENT EXCELLENCE**  
Sy. No.88, Chembanahalli, Near Dommasanadra Circle,  
Sarjapur Road, Bangalore 562 125 INDIA

## Industrial Visit: TVS Motor Company Ltd

Date: 8 May 2023

Time: 2:00 PM

Location: Hosur

### Purpose:

Explore the operations of TVS Motor Company Ltd and gain insights into the manufacturing sector. Participate in discussions and learn about industry best practices.

### Contact Information:

For inquiries, please contact Prof. Deepthi William at 9645127001.

---

## Industrial Visit: Infosys Pvt Ltd

Date: 08 April 2023

Time: 9:00AM

Location: Bangalore

### Purpose:

Experience firsthand the operations of Infosys Pvt Ltd and understand the key challenges and opportunities in the IT sector.

### Contact Information:

For inquiries, please contact Prof. Deepthi William at 9645127001.

That confirmation for the visit by mail which is attached with this document.



  
PRINCIPAL  
INTERNATIONAL SCHOOL OF MANAGEMENT EXCELLENCE  
Sy. No.88, Chembanehalli, Near Dommasanadra Circle,  
Sarjapur Road, Bangalore 562 125 INDIA



**TVS – Field Work on 08<sup>th</sup> & 13<sup>th</sup> May 2023**













## INDUSTRIAL VISIT TO TVS

TVS-Thirukkurugudi Vengaram Sundram

S ABDULLA ADEEN Z



On 8<sup>th</sup> May 2023, the B.com students of ISME had visited the TVS Manufacturing Plant located in Hosur. The visit was coordinated by the Industrial Visit Section of the HR Department of the Company. The Company was represented by Miss Yashaswini. The purpose of the visit was to gain *practical knowledge and insights into the manufacturing processes and operations of TVS, a renowned automotive company.*

TVS was founded in 1911 by T.V. Sundaram Iyengar, and has evolved into a multinational corporation with diverse business interests. It encompasses TVS Motor Company, TVS Credit Services Limited, TVS Electronics, and more. TVS Motor Company, a subsidiary, is one of India's leading two-wheeler manufacturers, renowned for its motorcycles, scooters, and mopeds.

During the industrial visit, the students had the opportunity to explore TVS' manufacturing facilities and witnessed the efficient production processes. The company utilises advanced technologies and automation to ensure quality and

International School of Management Excellence

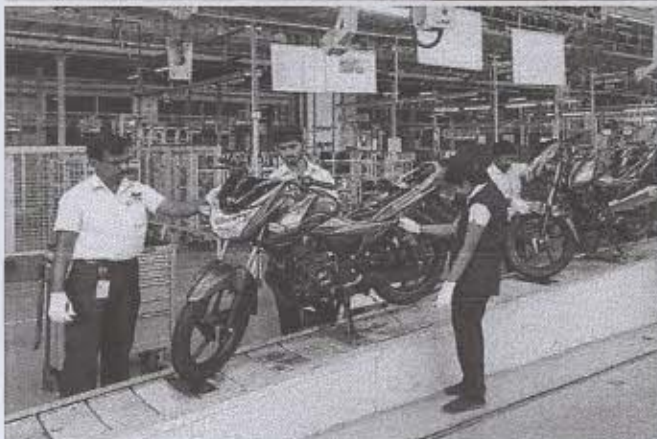
*Sheriff*  
Faculty in charge



*S. Adhithyan*  
PRINCIPAL  
INTERNATIONAL SCHOOL OF MANAGEMENT EXCELLENCE  
Sy. No.88, Chembanahalli, Near Doddanahalli Circle,  
Sarjapur Road, Bangalore 562 125 INDIA



productivity. The assembly lines shown at Plant No. 2 contained about 32 operations that manufactures economy range motorcycles and the higher end motorcycles including the motorcycles manufactured in collaboration with BMW. The plant specialises in the production of BMW G 310 R and BMW 310 GS as a collaboration deal with BMW.



The application of Quality Circles and inventory management systems like Kanban and JIT (Just in Time) techniques were briefly explained to students.

The students were then taken to the location where Gearbox casing is made. The supervisor showed the Machine fabrication where some of the major plastic parts were designed and tuned precisely to their specification. The entire unit was completely automated; it uses 3 robots which work continuously and CNC machines. They had two types of conveyor belts, one is the Stop and go belt which operates not too often and other was Continuous belts which works

International School of Management Excellence

*Shruti*  
Faculty in charge



*Radhika*  
PRINCIPAL

INTERNATIONAL SCHOOL OF MANAGEMENT EXCELLENCE  
Sy. No.88, Chembanahalli, Near Doddanahalli Circle,  
Sarjapur Road, Bangalore-562 125 INDIA

continuously where line assembly of the engine is done.



TVS' customer-centric approach was also emphasised during the visit. The students learned about their market research initiatives, customer feedback mechanisms, and after-sales service programs. It was evident that TVS values customer satisfaction and strives to meet the evolving needs of its consumers. The students learned about their efforts to reduce carbon emissions, conserve resources, and implement eco-friendly practices.

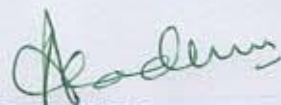
The industrial visit to TVS provided valuable insights into the operations, manufacturing processes, and corporate values of one of India's leading conglomerates. The students witnessed the company's commitment to innovation, quality, customer satisfaction, and sustainability. The visit enhanced the understanding of the automotive industry and inspired the students with TVS' achievements and best practices.

Overall, the industrial visit to TVS was an enriching experience, and we express our gratitude to the management and staff for their warm welcome and valuable insights.

International School of Management Excellence

  
Faculty in charge





PRINCIPAL

INTERNATIONAL SCHOOL OF MANAGEMENT EXCELLENCE  
Sy. No.88, Chembanahalli, Near Dommasandra Circle,  
Sarjapur Road, Bangalore 562 125 INDIA



## INDUSTRIAL VISIT REPORT

Thirukkurugudi Vengaram Sundram also known as TVS, is an Indian multinational motorcycle manufacturer. It was incorporated in the year 1911 and started its production in the year of 1980. It is the third largest two-wheeler manufacturer in India and also the second largest two-wheeler exported in India, exporting over 60 countries. It manufactures a wide range of two-wheelers, starting from mopeds, to scooters, commuter motorcycles, to racing inspired bikes.

On 11<sup>th</sup> May 2023 a field visit to TVS Motors manufacturing plant which is in Hosur was organized, we all left the college in the afternoon at 1:30 p.m. The plant we visited is the mother plant and the other plants are in Mysuru, Himachal Pradesh and Indonesia. The Research and Development plant is located further in some remote area. It has a huge floor space and multiple divisions for various processes to work on simultaneously. The Hosur plant employs over 14,000 people and operates for 16 hours per day in 2 shifts. There are multiple divisions at the plant some of them are Machine Assembly, Quality Control, Painting unit, Fabrication unit and Welding. The production process begins with the assembling or manufacturing of parts and their quality checks. The plant ensures the highest level of precision and accuracy via personal quality checks. These parts are sent to the assembling unit where robot units and humans work together to assemble the bikes. It also receives materials from the painting unit as required. The final product undergoes several tests and then approved.

The plant uses the Kanban system of inventory management to prevent short supply. It involves the use of cards or boards that represent work items and their status. Appropriately, *procurement department functions*. The plant also has a BMW segment since 2015 and parts required for this segment are imported through Germany. The products from this segment are exported to over 80 countries. The major market for other products is in India (BS6 model). The BS4 model is manufactured to export to the African countries. BS4 is now not manufactured in India due to environmental concerns but has a great market in South Africa.

The plant produces 140 BMW bikes and 4500 TVS bikes every day. The average time taken to manufacture a bike is said to be 7 minutes. The major products include Jupiter and Raiden. The CEO declares yearly targets which is customised as per the departments and converted in to monthly and weekly

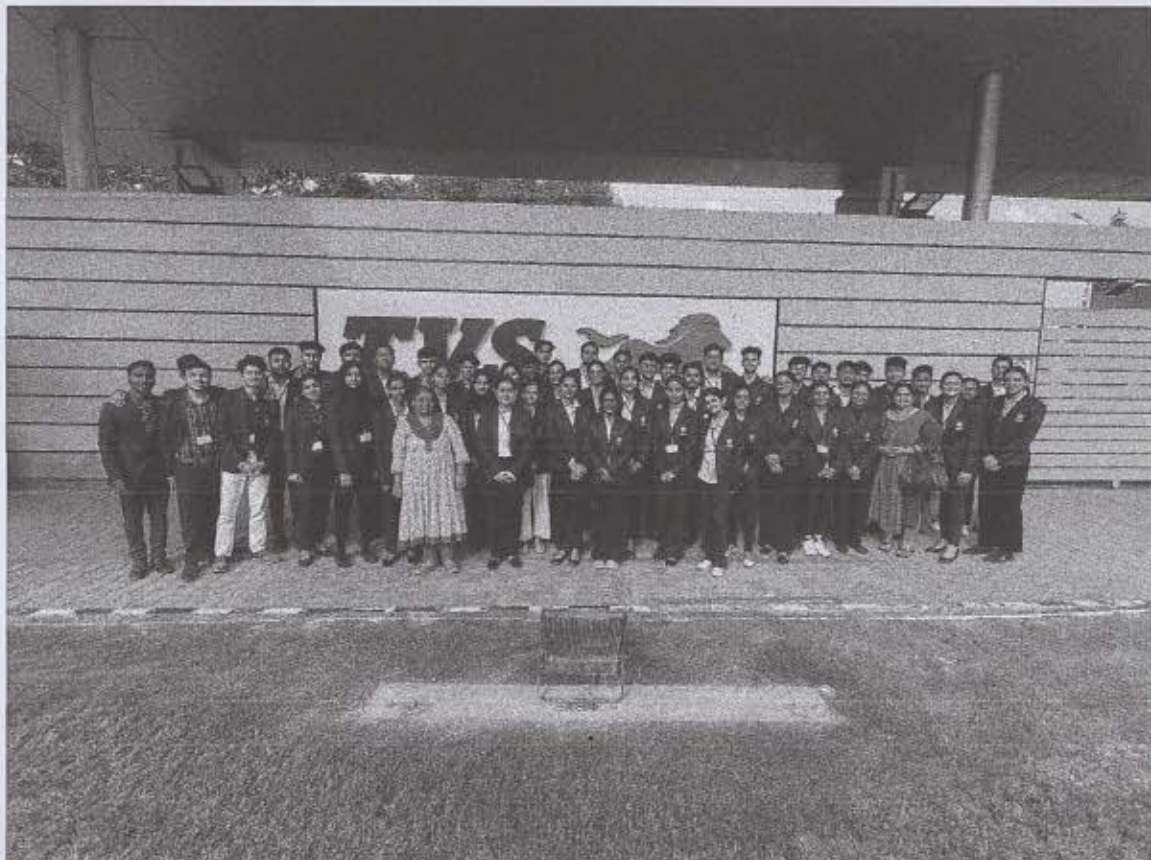


targets. Great efforts are made with proper coordination to achieve their given targets within the given time.

This visit gave an overview of the working of the production department at TVS Motors. It also gave us the information about different operations operating in a company. The plant's high level of automation and attention to detail made it evident that the company has championed its progress through Sustainable mobility and significant emphasis on quality. We returned back to our college at 5:30 p.m. in the later afternoon. This visit helped us gain insights into the manufacturing processes of TVS and also helped us understand the importance of coordination amongst all the departments operating in a certain company to *meet the expected results in the upcoming future.* We would thank our college and the teachers for arranging the field visit, the visit proved to be an invaluable experience.

Thank You

Some glimpse of the visit:



International School of Management Excellence

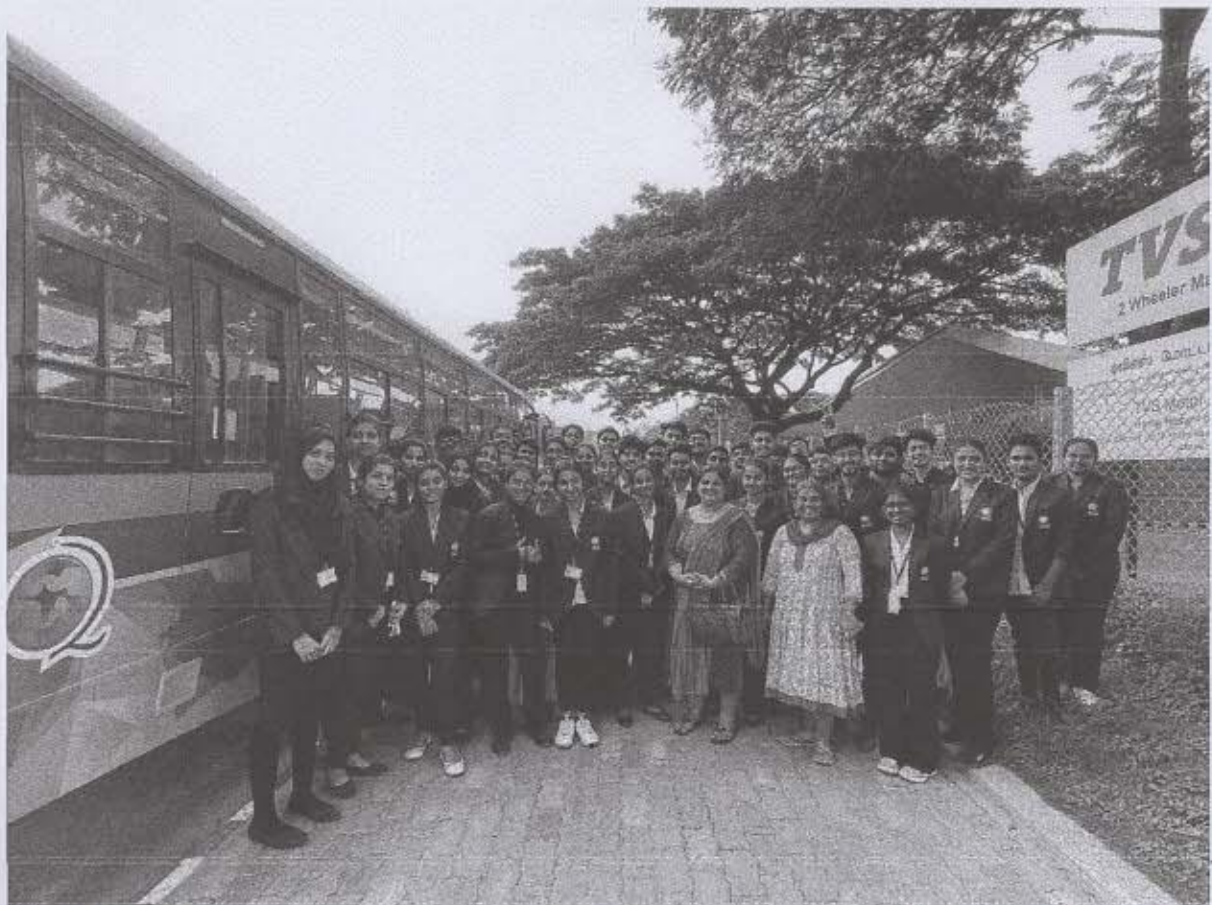
*Shree*  
Faculty in charge



*Pradip*  
PRINCIPAL

INTERNATIONAL SCHOOL OF MANAGEMENT EXCELLENCE  
Sy. No.88, Chembanahalli, Near Dommasandra Circle,  
Sarjapur Road, Bangalore 562 125 INDIA





International School of Management Excellence

*Shankar*  
Faculty in charge



*Shankar*  
PRINCIPAL

INTERNATIONAL SCHOOL OF MANAGEMENT EXCELLENCE  
Sy. No.88, Chembanahalli, Near Dommasanadra Circle,  
Sarjapur Road, Bangalore 562 125 INDIA





## REPORT ON INDUSTRIAL VISIT

Activity: Industrial visit

Date: 13<sup>th</sup> May 2023

Place: TVS Motors, Hosur Road, Tamil Nadu.

Time: 1:20 pm

The students of ISME, UG BBA 2 B section visited the TVS motors for gaining industrial experience. TVS stands for Thirukkurungudi Vengaram Sundram who was the founder of the TVS company. TVS is known for being the third-largest manufacturer of motorcycles, mopeds, and auto-rickshaws in India. The current CEO of the company TVS is K.N. Radhakrishnan (since 2008- present). They first started off as bus service then moved on to two and three-wheeler vehicles.

There were around 34 students present along with our in-charge teachers ShashiRekha Ma'am and Shruthi Ma'am, we reached at 2:00 pm. Our guide gathered all of us and asked a few questions regarding the company. Then we were allowed to question her about the company process and production. She explained that the company has four manufacturing plants, (Hosur, Mysore, Himachal Pradesh, and Indonesia).

Firstly, we were taken to plant No.2, Gate No.8, vehicle assembly line where it was divided into sub-assembly, pre-line, and main line. Under this one bike would be ready in just 42 seconds, and the product name is Raider. The PL line finishes 30% of the work and transfers to ML. Then it is transferred to the testing services which has four rounds, T1(Running conveyor), T2(Raiding test), T3(stimulation), and T4(overall). If no error it would be transferred to the material procurement process, then finally to FVPA (Final vehicle product audit). They do also have the product line of BMW which is completely automatic.

Secondly, under the machine shop, they focus on finishing major engine parts such as the cylinder head, crankcase, and cylinder block. There were also 7 automatic machines and more than 300 machines. Under the engine unit, TVS is known for manufacturing BS3, BS4, and BS6 engines. Only the BS4 engine is used in India others are transported overseas.

International School of Management Excellence

  
Faculty in charge



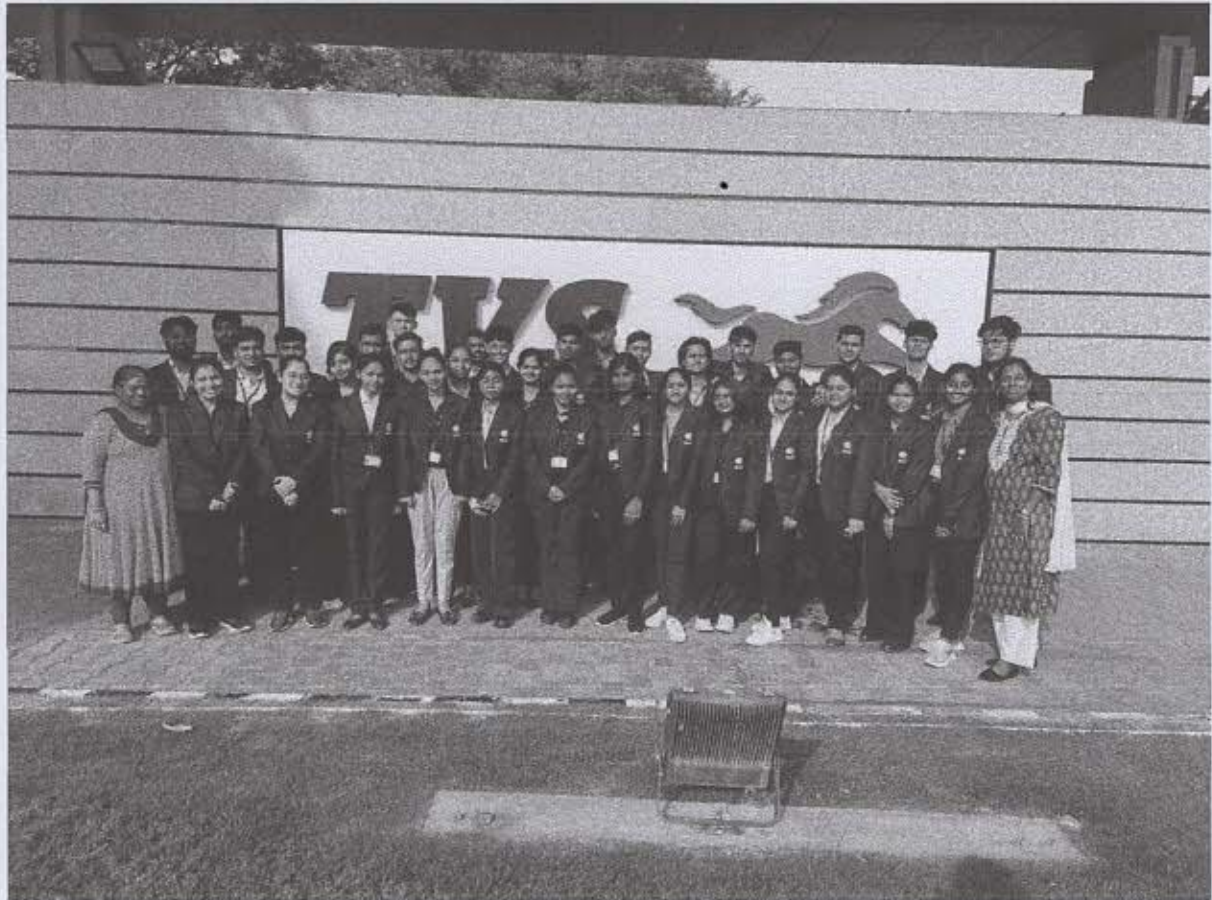
  
PRINCIPAL

INTERNATIONAL SCHOOL OF MANAGEMENT EXCELLENCE  
Sy. No.88, Chembanahalli, Near Dommasandra Circle,  
Sarjapur Road, Bangalore 562 125 INDIA



At last, we headed to the TVS company canteen and had tea along with our guide, took some photos along with our in-charge teachers and the guide. It was a memorable day for all of us.

THANK YOU



International School of Management Excellence

*Sheetha*  
Faculty in charge



*Shodh...*

PRINCIPAL

INTERNATIONAL SCHOOL OF MANAGEMENT EXCELLENCE  
Sy. No.88, Chembanahalli, Near Dommasandra Circle,  
Serjapur Road, Bangalore 562 125 INDIA





International School of Management Excellence

*Shruti*  
Faculty in charge



*Neelima*  
PRINCIPAL  
INTERNATIONAL SCHOOL OF MANAGEMENT EXCELLENCE  
Sy. No.88, Chembanahalli, Near Devaraj Circle,  
Serjapur Road, Bangalore 562 125 INDIA



Visit Starting attendance

TVS MOTOR COMPANY LIMITED, HOSUR

TVS

# PROFILE SHEET FOR INDUSTRIAL VISIT

Name of the Institution	: ISME		
Place	: Dommanandra		Visit Date : (as agreeable to TVS)
Course / Discipline / Semester	: Degree/BCom/Sem2		08/05/2023
Purpose of Visit	: Industrial Visit		

## Visitors Details

S.No.	Name	Gender	Contact Number	Signature
1	ELAINE DE COSTA	F	9112718465	EDC
2	SAPTARSHI DAS	M	9875319483	Edy
3	C SABAREENATH	M	6366345005	
4	RAGUL RAJ K	M	7305754505	Ragul Raj. K
5	TANMAY BAFNA	M	9075088996	Tanmay
6	JOHN APPADURAI	M	8506085543	John
7	SURABHI SRIVASTAVA	F	6394540124	Surabhi
8	SAMAJA T	F	9010490610	Samaja
9	MOHAMMED NUJMAN	M	9341009115	Abirend
10	SAI S GAYATHRI	F	8860938785	Sai S
11	SAATHWIK RAJESH	M	9611165853	Saathwik
12	ARJUN NAIR	M	7736186165	Arjun
13	ANKHITH ANOOP	M	8129102015	Ankith
14	AMMAR AHMAD KHAN	M	7234858711	Ammar
15	ISHIKA GOEL	F	9335269796	Ishika
16	PURAB SINGH SISODIYA	F	9067072891	Purab
17	YESHWANTH GONAPADU	M	7204028953	Yeshu
18	RAKSHITHA M	F	8431933946	Rakshitha
19	KEVIN JOJI	M	9008012374	Kevin
20	YADUKRISHNAN MENON	M	7560982290	Yadukrishnan
21	LOHITH R	M	6366018602	Lohith
22	BINOY S	M	9567901347	Binoys
23	MOKSH JALAN	M	8971789517	Moksh
24	KEERTHANA A	F	9944129139	Keerthana
25	SURABHI RAI	F	7407318215	Surabhi
26	S ABDULLA ADEEN	M	8310003481	Abdulla
27	B.G TEJESHWAR	M	9148497736	B.G Tejeswar
28	SLOKA BATHALA		9130052254	Sloka

International School of Management Excellence

PRINCIPAL

INTERNATIONAL SCHOOL OF MANAGEMENT EXCELLENCE  
Sy. No.88, Chembanehalli, Near Dommanandra Circle,  
Serjapur Road, Bangalore 562 125 INDIA

Faculty in charge





S.No.	Name	Gender	Contact Number	Signature
29	KAEYA GONSALVES	F	7773918270	<i>Kaeyya Gonsalves</i>
30	HEMAVARSHINI G H	F	9035756919	<i>Absent</i>
31	SNEHA G L	F	8971964841	<i>Sneha</i>
32	BHARRANI ARUMUGAM	M	9600860301	<i>Bharrani</i>
33	KOSHIKA SARAF	F	9907618901	<i>Koshiba</i>
34	LOKESH GANTA	M	9949402109	<i>Lokesh</i>
35	POOJITHA C	F	9148377931	<i>Poojitha</i>
36	AMRUTHA G	F	7760165238	<i>Amrutha</i>
37	VINIT BANSAL	M	7077924027	<i>Vinit Bansal</i>
38	NISHANT JAISWAL	M	6204729866	<i>Nishant</i>
39	HARSH BHALLA	M	7979886048	<i>Harsh</i>
40	SAHIL DANGI	M	7984297874	<i>Sahil</i>
41	BHUMIKA SINGH	F	6203811350	<i>Bhumika</i>
42	SUSHANT PARSURAMPURIYA	M	8017637651	<i>Sushant</i>
43	KUSHAL WARS	M	8792049711	<i>Kushal</i>
44	MADHU SHREE N	F	7019829798	<i>Madhu Shree N</i>
45	HARSHITHA S	F	7411697857	<i>Harshitha</i>
46	NIVEDA BALE	F	6363273412	<i>Niveda</i>
47	GARIMA KANDPAL	F	6397788646	<i>Garima</i>
48	GANPATH LAL	M	9442601152, 7708258779	<i>Ganpath</i>
49	RADHIKA GOPAL	F	9693237182	<i>Radhika</i>
50	VINUTHNA P	F	8298829889	<i>Vinuthna</i>

\* More than 50 members will not be accommodated for industrial visit.

Coordinator Name : Prof Livea Paul

Contact Number : 7760222595

Mail Id : [livea@ismex.in](mailto:livea@ismex.in); [corporatetraining@ismex.in](mailto:corporatetraining@ismex.in)

Authorized signature

International School of Management Excellence

*Livea Paul*  
Faculty in charge



*Livea Paul*  
PRINCIPAL

INTERNATIONAL SCHOOL OF MANAGEMENT EXCELLENCE  
Sy. No.88, Chembanhalli, Near Dommasandra Circle,  
Sarjapur Road, Bangalore 502 125 INDIA



## PROFILE SHEET FOR INDUSTRIAL VISIT

Name of the Institution : ISME

Place : Dommasandra

Visit Date : (as agreeable to TVS)

Course / Discipline / Semester : Degree/ BBA/Sem2

Purpose of Visit : Industrial Visit

## Visitors Details

S.No.	Name	Gender	Contact Number	Signature
1	KHEMKA TUSHAR	M	9157199350	
2	ARPITA SINHA	F	7667518300	
3	SIVA TEJA	M	9100645796	
4	T YASHASWINI SAI	F	9440874936	
5	DYLAN SHADAP	M	8416068697	<i>Dylan Shadap</i>
6	HARSHIT SARDAR	M	9734540024	
7	JANJANAM JAYANTH GOPAL	M	9985336389	<i>J. Jayanth</i>
8	GUMI SINGH	M	9695660443	
9	SUDESHNA MISTRY	F	8697505652	<i>Sudeshna</i>
10	PARTH NIKHIL	M	9468360323	<i>Parth</i>
11	DEEPA KUMARI	M	9508925521	<i>Deepa Kumari</i>
12	ARNAV YESANSURE	M	7385328660	<i>Arnav</i>
13	SAJJA LEENA	F	9573141233	<i>Leena</i>
14	RAMYA JALUJA	F	8688980748	<i>Ramya</i>
15	ASHLEY ASHISH	M	8603010816	<i>Ashley</i>
16	MANASWITH SHANKAR	M	6361111648	
17	TANISHA MENDIRATTA	F	7982111842	<i>Tanisha</i>
18	CHANDRAMAULI SINGH	M	6363089291	<i>Chandramauli</i>
19	SHIVAM PATIL	M	9322720489	<i>Shivam</i>
20	RIDAH NAIYAR KHAN	F	7909094864	<i>Ridha</i>
21	ALLEN SUJITH	M	9902822005	
22	ROYCE BARRETO	M	7249687301	<i>Royce</i>
23	RAHUL GULERIA	M	8580894196	
24	SUMIT TRIPATHY	M	9019045637	<i>Sumit</i>
25	NIYUTTAM SHAH	F	9509350120	<i>Niyuttam</i>
26	VEERA SANGAVI S	F	6379222543	<i>Veera Sangavi</i>
27	SUJAY KUMARI	F	6387552808	<i>Sujay</i>
28	ANUSHTHA ANIRASARWALA	F	9619672622	<i>Anushta</i>

International School of Management Excellence

Faculty in charge



PRINCIPAL  
INTERNATIONAL SCHOOL OF MANAGEMENT EXCELLENCE  
Sy. No.58, Chembanahalli, Near Dommasandra Circle,  
Sarjapur Road, Bangalore 562 125 INDIA



S.No.	Name	Gender	Contact Number	Signature
29	BHAVANA GUJAR	F	9110472869	Bhavana
30	LOHITH N	M	9964847675	(Lohith)
31	PREKSHA DESAI	F	9619316088	Preksha
32	MISBA H	F	7676933326	
33	CHETNA AGRAWAL	F	6202926909	chetna
34	SARVESH KARWA	M	9448117191	
35	ANSHAL MESHAM	M	8827468445	Anshul
36	SMEET MAHARAJWALA	M	9726098910	Smeeta
37	DODLA VEDANTH RAMI REDDY	M	9121361312	
38	SARAI SANDEEP GURME	M	8622961111	
39	VIKAS CHATURVEDI	M	7275581588	
40	MADHUSMITHA PODH	F	8260912689	
41	SAHIL GUPTA	M	7384072757	Sahil
42	ADITI MURMU	F	6200078484	Aditi
43	SWARANIK NATH	F	7044421361	
44	KANIK SHARMA	F	8264145395	Kanika
45	OM AGRAWAL	M	9334112450	
46	HARSH AGRAWAL	M	8931956379	
47	MOHIT YADAV	M	7879126297	
48	MAHITHA REDDY	F	8897771799	Mahitha
49	SHILPA G	F	9980013276	Shilpa
50	RISHABH BHARGAVA	M	7389493884	Rishabh
51	ARYAN SURYA	M	8296585967	Aryan
52	SHIVANSHU JHA	M	7903019605	Shivanshu

\* More than 50 members will not be accommodated for industrial visit.

Coordinator Name : Prof Sahshirekha

Contact Number : 9632489000

Mail Id : [sahshirekha@isme.in](mailto:sahshirekha@isme.in) [corporate@isme.in](mailto:corporate@isme.in)

International School of Management Excellence

*Sahshirekha*  
Faculty in charge

Authorized signature



*Sahshirekha*  
PRINCIPAL  
INTERNATIONAL SCHOOL OF MANAGEMENT EXCELLENCE  
Sy. No.88, Chembanahalli, Near Dommasanadra Circle,  
Sarjapur Road, Bangalore 562 125 INDIA



## PROFILE SHEET FOR INDUSTRIAL VISIT

Name of the Institution : ISME

Place : Dommasandra

Visit Date : (as agreeable to TVS)

Course / Discipline / Semester : Degree/BCom&amp;BBA/Sem2

Purpose of Visit : Industrial Visit

## Visitors Details

S.No.	Name	Gender	Contact Number	Signature
1	MUSTHAQ SALMAN Absent	M	8921359859	-
2	ANKIT KUMAR Absent	M	7654680176	-
3	SANA ANJUM MAHEBOOB	F	9480501402	Sana
4	LAKSHIKA CHOPRA	F	6396637766	Lakshika
5	AUNSHDEEP SINGH SOKHI Absent	M	9771357228	-
6	CHARISHMA REDDY	F	9353717383	PC
7	KUSH PATEL	M	9581979923	Kush
8	SAMYAK GUNDECHA	M	9022856463	Gundecha
9	MRINAL ANAND	M	8252932604	Mrinal
10	VIRAT MISHRA	M	8299736820	V. Mishra
11	EMMANUEL ELIAH	M	7406062641	Emmanuel
12	BLESSON BIJU	M	8086219278	Blesson
13	PURNA SWETHA KASIKALA	F	8977995788	Swetha
14	JAMES GRACIAS	M	7798437332	James
15	ABDUL AHAD	M	8509067208	Abdul
16	NEELAM VENKATA SAI MEGHANA	F	9059466056	Neelam
17	DIVAKAR SENTHILKUMAR	M	7418946044	Divakar
18	ANANT GOSAIN	M	8595986601	Anant
19	SHRUTI SONI	F	9016104489	Shruti
20	SHIVANSHU JHA	M	7903019605	-
21	ANUBHAV KASHYAP	M	9395663660	Anubhav
22	ANUSHKA MANDAL	F	8102934588	Anushka
23	PRISHA SINGH	F	9939395273	Prisha
24	HAMSINI V International School of Management Excellence	F	9482527352	Hamsini
25	JYOTI THAKUR	F	8627023402	Jyoti
26	PARTH AGRAWAL	M	9552579922	P. Agrawal
27	HARSH KEJRIWAL	M	7561951681	Harsh
28	TRISHA VIJAY	F	8056408063	Trisha



INTERNATIONAL SCHOOL OF MANAGEMENT EXCELLENCE  
 Sy. No.88, Chembanahalli, Near Dommasandra Circle,  
 Sarjapur Road, Bangalore 562 125 INDIA



S.No.	Name	Gender	Contact Number	Signature
29	SHAHINA MOHAMMED	F	8910941605	<i>Shahina</i>
30	KRISH BOTHRA	M	9352600492	<i>Krish</i>
31	KUMAR RAJAT SAH	M	8840094939	<i>Rajat</i>
32	SAKAR SINGH CHANDEL	M	8602219500	<i>Sakar</i>
33	SAHANA GUJJAR	F	7411078158	<i>Sahana</i>
34	LOKESH K	M	9345561443	<i>Lokesh</i>
35	MUHAMMED SHAHAZAIN SIFATH	M	8904246677	<i>Muhammed</i>
36	ANUSHTA CHOWDHARY	F	8639556111	<i>Anushta</i>
37	SANSKRITI SINGH	F	8329203307	<i>Sanskriti</i>
38	VEDIT SHARMA	M	7727804900	<i>Vedit</i>
39	AKSHAT VEKARIYA	M	9327779629	<i>Akshat</i>
40	ARYAN SURYA	M	8296585967	<i>Aryan</i>
41	SUHANA MALHOTRA	F	7009841881	<i>Suhana</i>
42	GAGGUTURU AHMED	M	9885425754	<i>Gagaturu</i>
43	SUJAL THAKARAR	M	9909206779	<i>Sujal</i>
44	SNEHA RAJAK	F	8389987430	<i>Sneha</i>
45	NISHA KUMARI	F	7292848774	<i>Nisha</i>
46	MANSEE BHARTY	F	8954881613	<i>Mansee</i>
47	SRINIVAS MANOJ KUMAR	M	7995329156	<i>Srinivas</i>
48	RADHIKA SRILAKSHMI CHANDRAMOULI	F	9360034970	<i>Radhika</i>
49	APOORVA BASKOTA	M	9036749202	<i>Apoorva</i>

\* More than 50 members will not be accommodated for industrial visit.

Coordinator Name : Prof Shruti Nanjappa

11th May

Contact Number : 9108068810

Mail Id : [shruthi@ismee.in](mailto:shruthi@ismee.in); [corporate@ismee.in](mailto:corporate@ismee.in)

International School of Management Excellence

*Shruti*  
Faculty in charge



*Shruti*  
PRINCIPAL

INTERNATIONAL SCHOOL OF MANAGEMENT EXCELLENCE  
Sy. No.98, Chemburahalli, Near Dommasandra Circle,  
Serjapur Road, Bangalore 562 125 INDIA  
Authorized signature

50 A. Sree Teja

51 T. Yashwini Sai

52 Rehman

53 Tushar

54 MISBA H

*Shruti*

Yashwini

Rehman

Tushar

Misba